

# SHARP®

Installing/  
Uninstalling

Basic  
Operations

Adjusting and  
Controlling

Transferring Images

Saving a  
Custom Image

Troubleshooting

Glossary/  
Services

# *Sharp Advanced Presentation Software*

## OPERATION MANUAL

Professional Edition  
Version 1.5

Please read operation manual carefully before using your software.

This software operates under the Microsoft Windows 95, 98, NT4.0 Workstation, Me, 2000 Professional, XP Home or Professional Edition operating systems. This manual references only these Microsoft Windows Operating Systems and compatible mouse devices. For details please refer to the Microsoft Windows operation manual. If there are any terms in the manual you do not understand, please refer to “Glossary” (page 99).

Note that **Sharp Advanced Presentation Software Professional Edition** is subject to change without prior notice for upgrading and improvement.

The latest information on this software can be found at the following web site:

<http://www.sharp-world.com/projector/>

- Microsoft and Windows are registered trademarks of Microsoft Corporation, USA.
- All other brand or product names are trademarks or registered trademarks of their respective holders.
- Great effort has been expended to ensure that the descriptions in this manual are correct. Should you, however, come across an inconsistency, a telephone call or letter to SHARP Corporation noting the questionable area would be highly appreciated.
- This software is the property of SHARP Corporation and all related copyright and other rights belong to SHARP Corporation.
- This manual may not be transferred wholly or in part in any form whatsoever without prior written permission. Uses other than personal use are for copyright reasons not permitted without the written permission of SHARP Corporation.
- SHARP Corporation shall in no event be liable for damages, loss of revenue or third party claims arising from the use of the software.
- Software specifications and the contents of the operation manual are subject to change without prior notice.
- Operating speed may slow down depending on computer operating environment and processing capability.
- This software is based in part on the work of the Independent JPEG Group.
- The software uses LEAD Tools Pro developed by Bunka Orient Corp. and Lead Technologies, Inc.

This software is designed for presentations and for enhancement of images projected from SHARP projectors. It includes the following functions:

## **Projector Control Software:**

### **Network Control**

This function allows you to control the projector's functions/adjustments from your PC.

A maximum of 250 projectors or grouped projectors can be controlled from a central PC/CONTROLLER.

The Video Wall function, which normally requires expensive devices, can be performed without purchasing additional hardware.

When the backup function is used, the projector standing by as the backup projector automatically turns on if an error occurs in the other projector(s).

## **Image Enhancement Software:**

### **Gamma Correction**

This function allows you to set the projector's Gamma values directly from your PC. The ease of specifying preset values enables precise custom brightness, contrast and color adjustments.

Please note that this function can only be performed via a Network (COM and LAN port).

## **Support Software for Presentations:**

### **Presentation Transfer**

This mode transmits **BMP** and **JPEG** images to the projector. By saving presentation slides as BMP or JPEG images, you can do an entire presentation wirelessly.

### **Capture & Transfer**

This mode allows you to transmit an image currently displayed on your monitor. As simple as clicking the "Capture & Transfer" button in the application.

### **Quick Transfer**

This mode is similar to "Capture & Transfer" but it can easily be used by clicking the "Right" mouse button.

### **NOTE**

- Wireless image transfer can only be used with the XG-NV5/6/7. Wireless image transfer cannot be used to transfer images with other models.
- The following models do not support JPEG image transfer: XG-P20X, XG-P25X, XG-V10X, XG-V10W.

## For Your Reference

There are five functions via the Network (COM and LAN port).

If you want to control the projector adjustments from your PC...



**Network Control** controls the projector adjustments via the Network (COM and LAN port). (See [page 24](#))

If you want to adjust image colors on the screen...



**Gamma Correction** controls the image colors via the Network (COM and LAN port). (See [page 76](#))

If you want to project your presentation slides saved as BMP or JPEG files...



**Presentation Transfer** transfers images quickly & easily in presentation format. (See [page 82](#))

If you want to project an image of what is currently displayed on your monitor...



**Capture & Transfer** captures the image on the PC monitor and transfers it to the projector. (See [page 86](#))

If you want to project a single image quickly...



**Quick Transfer** captures the image on the PC monitor and transfers it to the projector using the mouse as a shortcut. (See [page 88](#))

# Contents

Foreword .....	3
For your reference .....	4

## Installing/Uninstalling

---

<b>Required Hardware and Software .....</b>	<b>9</b>
<b>Projector and PC Connections .....</b>	<b>10</b>
Connecting Multiple Projectors with PC .....	10
Connecting Single Projector with PC .....	11
<b>Installing the Software .....</b>	<b>12</b>
<b>Setting up your PC for Infrared Communications (IrCOM) .....</b>	<b>16</b>
<b>Uninstalling the Software .....</b>	<b>19</b>

## Operations

---

<b>Starting and Quitting .....</b>	<b>20</b>
Opening Modes .....	20
Starting from the “Sharp Advanced Presentation Software Professional Edition” icon in the Windows task tray .....	20
Starting from the Windows “Start” button .....	20
Starting from the “Sharp Advanced Presentation Software Professional Edition” shortcut icon on the Windows desktop .....	21
Selecting the Main Projector Model .....	21
Changing the Auto-Launch Setting .....	22
When “Auto-Launch ON” is selected .....	22
When “Auto-Launch OFF” is selected .....	22
Selecting the Mode .....	22
Quitting .....	23
Help .....	23
<b>Setup for Controlling the Projectors .....</b>	<b>24</b>
Setup flowchart .....	24
Selecting the Operation Mode .....	25
Scan Setting .....	26
Deleting the set IP address .....	27
Projector Setting .....	28
Multiple Projector Operation Mode .....	28
Single Projector Operation Mode (For the connection via RS-232C or IrCOM) .....	30
Single Projector Operation Mode (For the connection via LAN) ....	31
<b>Controlling Multiple Projectors .....</b>	<b>32</b>
Multiple Control .....	32
Group Setting .....	35
To remove projectors belonging to groups from the group .....	36
To delete a group .....	36
<b>Password Setting .....</b>	<b>37</b>
Setting the Password .....	37
Changing the Password .....	39
<b>Selecting the Keylock Level .....</b>	<b>40</b>
<b>Projector Name and Unique Name Setting .....</b>	<b>42</b>

<b>E-mail Sending Function</b> .....	<b>44</b>
Sender Setting .....	44
Sender settings .....	45
E-mail Address Book Setting .....	46
E-mail message recipient address setting .....	46
Registering the recipient's e-mail address .....	47
Specifying the recipient's e-mail address .....	48
Changing the registered recipient's e-mail address .....	48
Deleting the registered recipient's e-mail address .....	49
Send E-mail Setting .....	50
Automatic e-mail sending function settings .....	51
Periodic e-mail sending function settings .....	51
Settings for additionally attached files .....	52
Sending the "Projector Condition" e-mail message manually .....	52
<b>Error Notification Function</b> .....	<b>53</b>
<b>Projector Timer Control</b> .....	<b>54</b>
<b>Backup Function</b> .....	<b>56</b>
Backup Function Settings .....	56
Interval Time Setting .....	57
Resetting after the backup function has been activated .....	59
<b>Controlling the Projector's Adjustment</b> .....	<b>60</b>
Advanced Control for Adjustment .....	60
Multiple connections .....	61
Single connection .....	62
Basic Operation of the Adjustment Sheet .....	63
"Set Up" Adjustment .....	64
"Input PICT" Adjustment .....	65
"Fine Sync" Adjustment .....	66
"Audio" Adjustment .....	67
"Options" Adjustment .....	68
"C.M.S" Adjustment .....	70
<b>Save Control Setting and Load Control Setting</b> .....	<b>71</b>
To make "Save Control Setting" .....	71
To make "Load Control Setting" .....	71
<b>Video Wall Setting</b> .....	<b>72</b>
To fine-adjust the vertical and horizontal position .....	73
To reset the current assignment settings .....	73
Projector image assignment with the Video Wall Setting .....	74
Settings and considerations regarding the Wide Video Wall .....	75
<b>Adjusting Images</b> .....	<b>76</b>
Gamma Correction .....	76
Adjusting the Gamma Curve .....	78
Setting the gamma correction area .....	79
Saving the Gamma Correction Settings .....	80
Loading the Gamma Correction Settings .....	80
Resetting Gamma .....	80

<b>Setup for Transferring Images .....</b>	<b>81</b>
Changing Compression Rate .....	81
<b>Transferring Images .....</b>	<b>82</b>
Presentation Transfer .....	82
To send a single image (“Send Image”) .....	84
To send all the images (“Self Run”) .....	85
Capture & Transfer .....	86
To send another image .....	87
Quick Transfer .....	88
To send another image .....	89
<b>Saving a Custom Image as Startup Image and Background Image ...</b>	<b>90</b>

## **Appendix**

---

<b>Table of Functions by Model .....</b>	<b>92</b>
<b>Troubleshooting .....</b>	<b>93</b>
<b>List of Error Messages .....</b>	<b>96</b>
<b>Glossary .....</b>	<b>99</b>
<b>Services .....</b>	<b>102</b>



## Required Hardware and Software

**Sharp Advanced Presentation Software Professional Edition** requires the following hardware and software for operation.

**PC running under Microsoft Windows 95, 98, NT4.0 Workstation, Me, 2000 Professional, XP Home or Professional Edition**

\* *Operations are confirmed with Japanese and English versions of those Windows operating systems only.*

<b>CPU</b>	233 MHz Pentium or higher is recommended.
<b>Display</b>	A 800 × 600 dot display capable of displaying 65,536 colors or more
<b>Memory</b>	64 MB or more (Windows 95/98/NT4.0/Me/2000) 128 MB or more (Windows XP)
<b>Hard disk free space</b>	50 MB or more
<b>Interface</b>	<b>RS-232C</b> serial port for transferring images and controlling the projector

### CD-ROM drive

#### **NOTE**

Note that this software may not operate normally if the serial port settings, etc., are not correct when serial equipment other than projectors is also connected to the computer.

### Using infrared communications (**IrCOM**)

If you use the NV5/6/7 projector, transferring images can be performed using infrared communications (IrCOM). The PC requires a built-in infrared communications port or an external infrared communications adapter.

- **For Windows 95 users:**  
**Microsoft IrDA 2.0 (Infrared Driver) must be installed on your PC to use this software. If it is not installed, you can obtain it from the Microsoft's site on the Internet.**
  - **For Windows 98 users:**  
**Microsoft Windows 98 supports IrDA communications as a default program.**  
**Please consult to Microsoft operation manual for more details.**
  - **For Windows NT4.0 Workstation, Me, 2000 Professional, XP Home or Professional Edition users:**  
**Infrared communications (IrCOM) cannot be used.**
  - **The transmission speed of infrared communications is dependent on the IrDA version of the PC.**
    - IrDA 1.0 : 9,600 bps - 115.2 kbps
    - IrDA 1.1 : 4 Mbps
- Therefore the actual speed depends on the IrDA version your PC supports.**  
**See the computer's instruction manual for the IrDA specifications.**

#### **NOTE**

We cannot guarantee that the software will operate on computers whose motherboards have been changed or modified, or on computers that the users have configured themselves.

# Projector and PC Connections

This software requires the use of an RS-232C serial cable, LAN cable or infrared communications. For details on PC connections, refer to the projector's operation manual.

## **CAUTION**

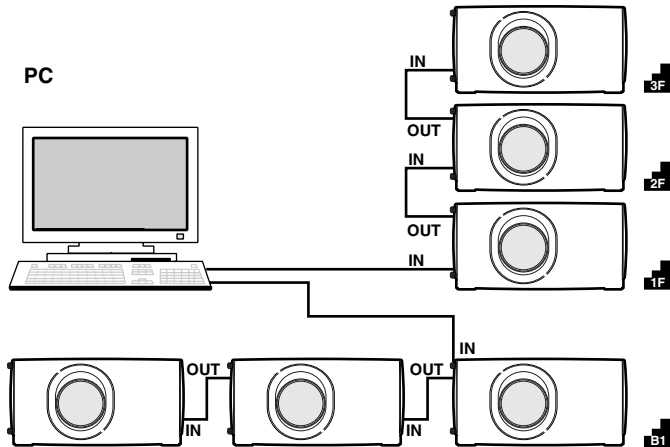
Before connecting, be sure to turn both the projector and the computer off. After making all connections, turn the projector on first. The computer should always be turned on last.

## **NOTE**

- Please read the computer's instruction manual carefully.
- If you use the NV5/6/7 projector, image transfer by using infrared communications can be available.

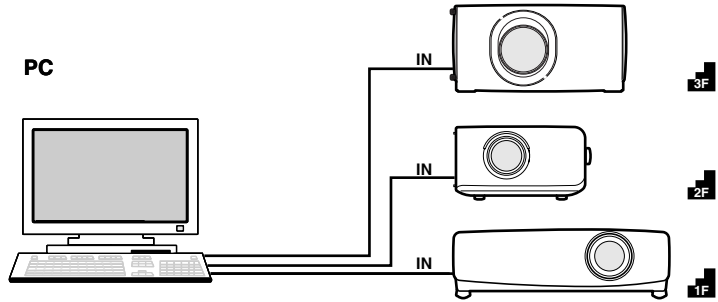
## Connecting Multiple Projectors with PC

When connecting multiple projectors using ID numbers (when forming a network system consisting only of XG-V10 Series and XG-P20X and XG-P25X projectors)



- The connection between PC and the Projector or the Projector and the Projector is possible by using the projector's RS-232C IN/OUT terminal.
- Up to 250 projectors can be connected.
- Up to 99 COM ports can be used.
- Daisy chain connections are possible.
- LAN connections are possible only with models from the XG-V10 series with the optional extension board (AN-L10T) installed.
- See "Table of Functions by Model" (page 92) about the projector's available functions.

When connecting multiple projectors without using ID numbers (When forming a network including projectors other than the XG-V10 Series and XG-P20X and XG-P25X projectors)



- Up to 99 projectors can be connected.
- Up to 99 COM ports can be used.
- Daisy chain connections are not possible.
- LAN connections are not possible.
- See “Table of Functions by Model” (page 92) about the projector’s available functions.

**NOTE**

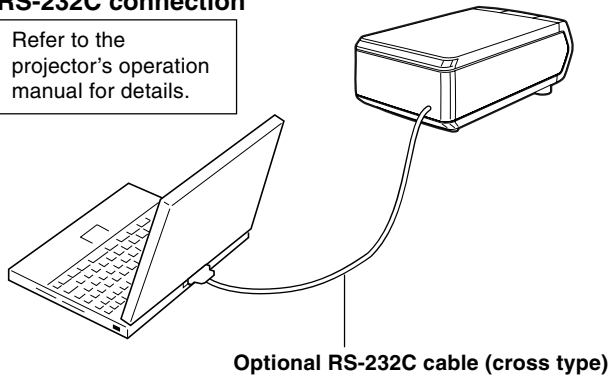
Connect one projector per COM port.

If you want to use the connection via the COM ports, the same number of COM ports as the projectors is needed. If the number of COM ports built in your PC is less than the number of projectors, purchase the extension board (commercially available) to add COM ports to your PC.

## Connecting Single Projector with PC

### RS-232C connection

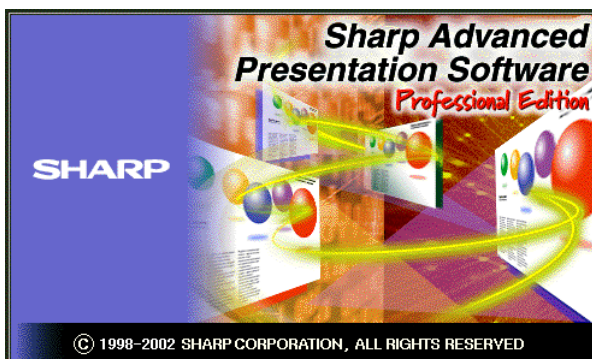
Refer to the projector’s operation manual for details.



# Installing the Software

This software can be installed using the installation program supplied on the “**Sharp Advanced Presentation Software Professional Edition CD-ROM**”.

- 1 Make sure that this software is suited for your computer.**  
For details, refer to “Required Hardware and Software” (page 9).
- 2 Quit all running applications before installing this software.**  
Be sure to quit all other applications so that no problems occur with the installer.
- 3 Delete the previous version of the Sharp Advanced Presentation Software.**  
For details, refer to “Uninstalling the Software” (page 19).
- 4 Insert the “Sharp Advanced Presentation Software Professional Edition CD-ROM” in the CD-ROM drive.**
- 5 Double click the “My Computer” icon or select Windows Explorer.**
- 6 Double click the CD-ROM drive icon in the “My Computer” or in Windows Explorer.**
- 7 Double click the “SAPS\_PRO” folder.**
- 8 Double click the “SETUP1.EXE” icon.**
  - ▶ The “Sharp Advanced Presentation Software Professional Edition” Opening Image will be displayed.



## 9 Select the language of the software to be installed.

**NOTE**

Select a language appropriate for your computer's environment.

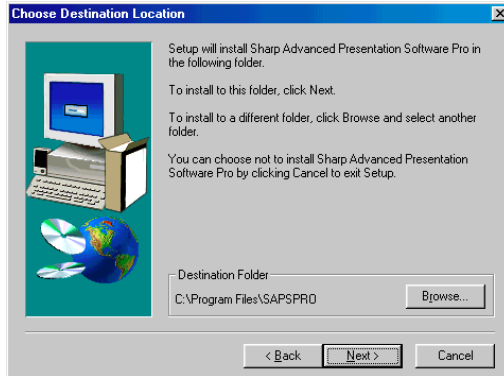


► The “**Sharp Advanced Presentation Software Professional Edition**” dialog box will open.



## 10 Click “Next>”.

- ▶ The “**Choose Destination Location**” dialog box will open.



## 11 The folder under which the software will be installed is displayed in “Destination Folder”.

### NOTE

To select another folder, click “**Browse...**”.

## 12 Click “Next>”.

- ▶ “**Auto-Launch Setup**” dialog box will open.



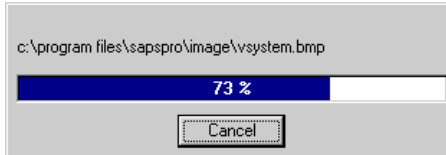
- 13** Click “ON” under “Auto-Launch” to automatically launch the software every time you start your PC. (Recommended)

**NOTE**

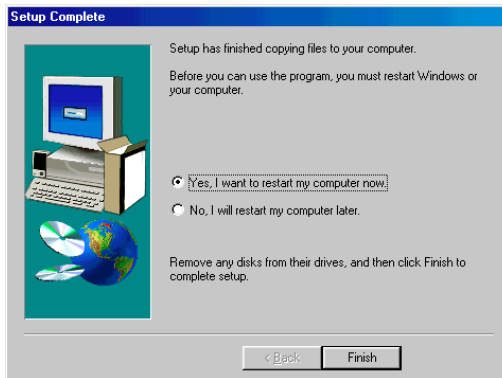
If you set “Auto-Launch ON”, a “Sharp Advanced Presentation Software Professional Edition” icon will appear in the Windows task tray. If not, use the “Sharp Advanced Presentation Software Professional Edition” shortcut icon on the desktop or the Windows “Start” menu.

- 14** Click “Next>”.

- Installation will start.



- When the installation is completed, the “Setup Complete” dialog box will open. To use the program immediately, please restart your computer.



- 15** Click “Finish”.

# Setting up your PC for Infrared Communications (IrCOM)

If you use the NV5/6/7, image transfer can be performed using infrared communications (IrCOM).

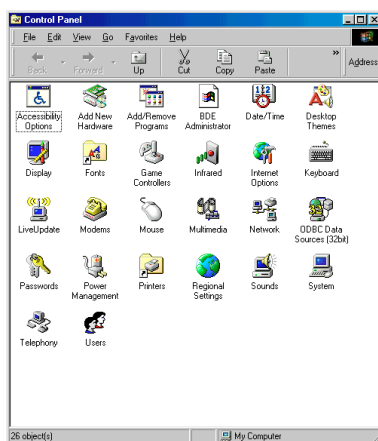
To use infrared communications, set the PC's port for infrared communications according to the following steps.

## NOTE

Infrared communications (IrCOM) cannot be used with Windows NT4.0 Workstation, Me, 2000 Professional, XP Home or Professional Edition.

## 1 Click “Start”, and then click “Settings”, then select “Control Panel”.

► The “Control Panel” window will open.



## 2 Double click the “Infrared” icon.



► The “Infrared Monitor” window will open.

## NOTE

For Windows 95 users:

If an “Infrared” icon is not displayed the Microsoft IrDA 2.0 (Infrared Driver) is not installed on the computer.

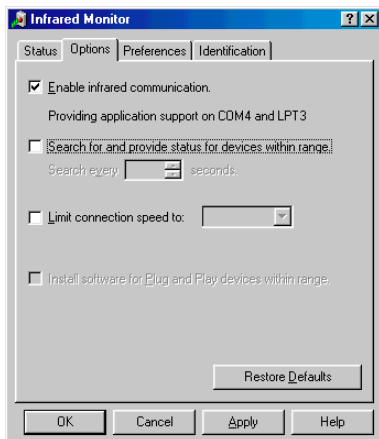
You can obtain it from the Microsoft's site on the Internet.





### 3 Click the "Options" tab.

► The "Options" sheet will open.



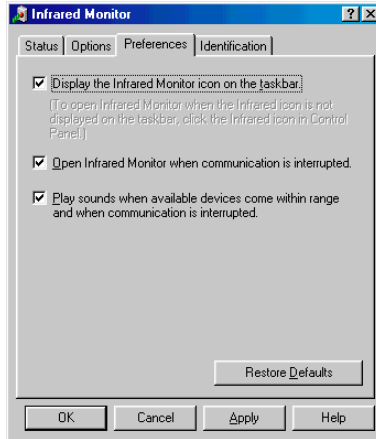
### 4 Check the "Enable infrared communication" check box. Select the port used for infrared communications.

#### NOTE

Refer to the PC's instruction manual for the appropriate port settings. Do not check the "Search for and provide status for devices within range" and "Limit connection speed to" check box.

## 5 Click the “Preferences” tab.

- ▶ The “Preferences” sheet will open.

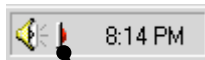


## 6 Click “Restore Defaults”.

- The system will return to standard settings.

## 7 Click “OK”.

- ▶ The “Infrared Monitor” window will close and the “Infrared” icon will appear in the Windows task tray.



**Infrared icon**

### NOTE

About the “Infrared” icon



Enable: Ready to transfer



Disable: Not ready to transfer

# Uninstalling the Software

Always uninstall **Sharp Advanced Presentation Software Professional Edition**, when installing a new or updated version.

**1 Make sure that the software is closed before proceeding.**

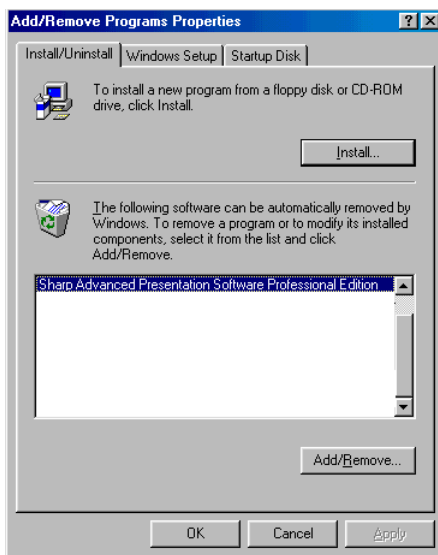
**NOTE**

Before uninstalling **Sharp Advanced Presentation Software Professional Edition**, the “Auto-Launch” setting must be “OFF”. For details, see [page 22](#).

**2 Click “Start”, then click “Settings”, and then select “Control Panel”.**

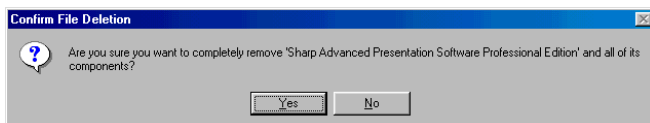
**3 Double click the “Add/Remove Programs” icon.**

**4 Click the “Sharp Advanced Presentation Software Professional Edition”.**



**5 Click the “Add/Remove...”.**

**6 Click the “Yes”.**



**7 When uninstallation is correctly completed, “Uninstall successfully completed” will appear. Click “OK”.**

# Starting and Quitting

## Opening Modes

Before starting the software, make sure that the projector and the PC are correctly set up. There are three ways to start up the software.

### Starting from the “Sharp Advanced Presentation Software Professional Edition” icon in the Windows task tray



#### NOTE

This icon appears when “**Auto-Launch ON**” is selected. See [page 22](#) for “**Auto-Launch**” setting.

#### 1 Start up the projector.

Make sure to turn the projector on first. The computer should always be turned on last.

#### NOTE

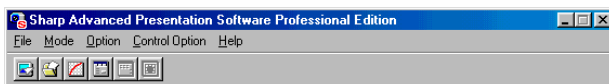
The projector must be in IrCOM mode to receive the images. Press the “IrCOM” button on the projector or the remote control.

#### For NV5/6/7 users:

To use infrared communications, select the “IrCOM” mode, referring to the projector operation manual for details.

#### 2 Start up the PC. Click the “Sharp Advanced Presentation Software Professional Edition” icon in the Windows task tray.

▶ The “Sharp Advanced Presentation Software Professional Edition” window will open.



### Starting from the Windows “Start” button



#### 1 Start up the projector.

Make sure to turn the projector on first. The computer should always be turned on last.

#### NOTE

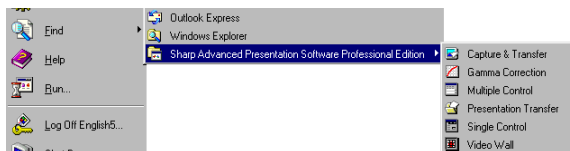
The projector must be in IrCOM mode to receive the images. Press the “IrCOM” button on the projector or the remote control.

#### For NV5/6/7 users:

To use infrared communications, select the “IrCOM” mode, referring to the projector operation manual for details.

- 2 Start up the PC. Click the “Start” button, set the pointer to “Programs” and then “Sharp Advanced Presentation Software Professional Edition”.

► The mode dialog box will open.



## Starting from the “Sharp Advanced Presentation Software Professional Edition” shortcut icon on the Windows desktop

- 1 Start up the projector.

Make sure to turn the projector on first. The computer should always be turned on last.

### NOTE

The projector must be in IrCOM mode to receive the images. Press the “IrCOM” button on the projector or the remote control.

**For NV5/6/7 users:**

To use infrared communications, select the “IrCOM” mode, referring to the projector operation manual for details.

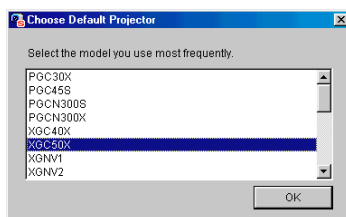
- 2 Double click the “Sharp Advanced Presentation Software Professional Edition” shortcut icon on the Windows desktop.

► The mode dialog box will open.



## Selecting the Main Projector Model

- 1 Select the main projector model you want to use.



### NOTE

This dialog box appears the first time you start the “Sharp Advanced Presentation Software Professional Edition”.

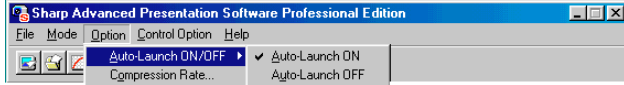
If you want to change the projector model, you can change it on the “Projector Setting” dialog box ([page 28](#)).

## Changing the Auto-Launch Setting

---

The default “**Auto-Launch**” setting is “**ON**”. This automatically starts the software when the PC starts up. You can change the setting as follows.

- 1 Click the “**Option**” menu, and select “**Auto-Launch ON/OFF**”.
- 2 Select the setting as required.



### When “Auto-Launch ON” is selected

- The “**Sharp Advanced Presentation Software Professional Edition**” icon is displayed in the Windows task tray.
- The software is automatically launched when the PC starts up.

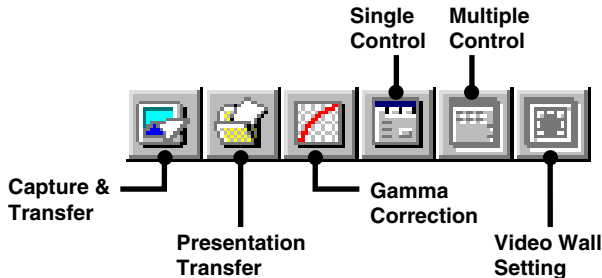
### When “Auto-Launch OFF” is selected

- The “**Sharp Advanced Presentation Software Professional Edition**” icon is removed from the Windows task tray.
- In this case the software must be started from the “**Start**” menu or the “**Sharp Advanced Presentation Software Professional Edition**” shortcut icon on the Windows desktop.

## Selecting the Mode

---

- 1 Start up the projector.
- 2 Select the mode you require from the “**Mode**” menu. Or you can use the shortcut buttons below the menu bar.




- The mode dialog box will open.

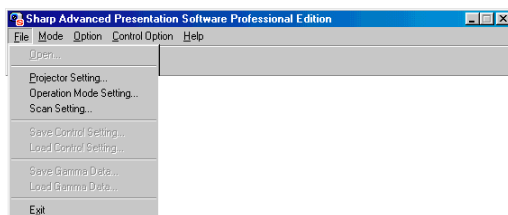
#### NOTE

The selectable modes depend on the operation mode set at “Selecting the Operation Mode” (page 25).

For details, refer to the “Table of Functions by Model” (page 92).

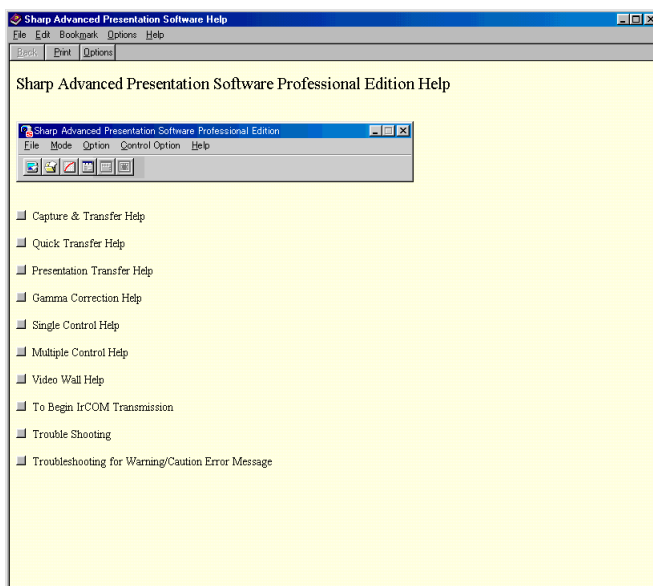
## Quitting

Click the **“File”** menu, and select **“Exit”**.  
Or you can use the  button.

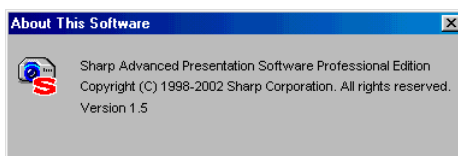


## Help

To view Help, click the **“Help”** menu. When the **“Help”** window opens, click the desired item in the Help list.



To check the software version, select **“About This Software”** from the **“Help”** menu.



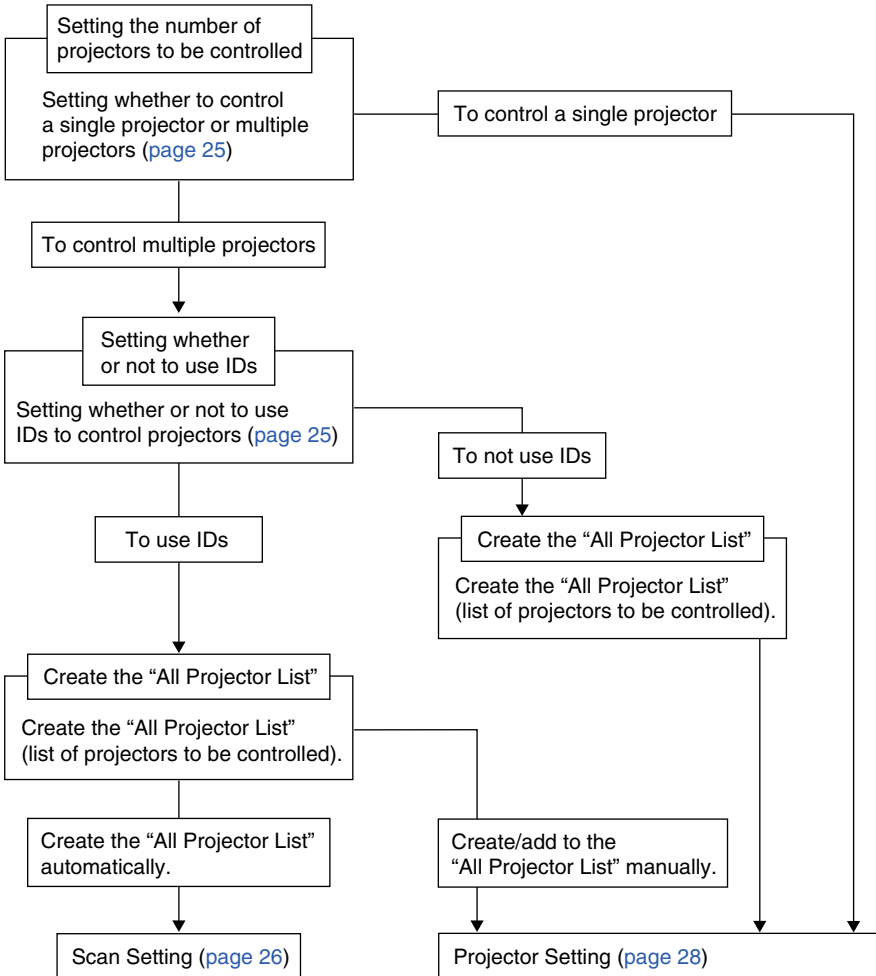
# Setup for Controlling the Projectors

The settings for the projectors must first be made in the software before attempting to control any projector. Settings are made in “Scan Setting” or in “Projector Setting”.

**NOTE**

The settings for the ID numbers on the projector are needed to control the projector by using the ID numbers.

## Setup flowchart



**NOTE**

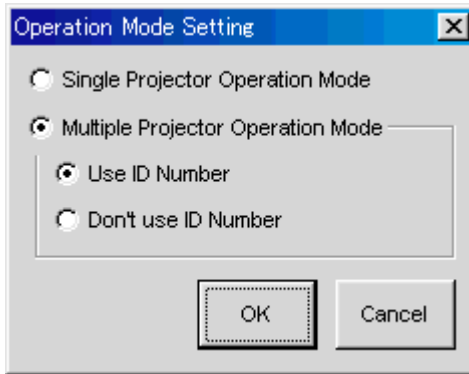
From the following pages onwards, **Single** and/or **Multi** are displayed at the top of the page. Single: Functions used when the projector is used in “Single Projector Operation Mode.” Multi: Functions used when the projectors are used in “Multiple Projector Operation Mode.”



## Selecting the Operation Mode

---

- 1 Select “Operation Mode Setting” from the “File” menu.
- 2 Select the **Operation Mode**.



- To operate a single projector, select “Single Projector Operation Mode”
- To operate multiple projectors, select “Multiple Projector Operation Mode”, then choose “Use ID Number” or “Don’t Use ID Number”.

### NOTE

- When “Don’t Use ID Number” is selected for “Multiple Projector Operation Mode”, up to 99 projectors can be operated at once. Models other than the XG-V10 Series, the XG-P20X or the XG-P25X projector can be used.
- When “Use ID Number” is selected for “Multiple Projector Operation Mode”, up to 250 projectors can be operated at once. If selecting “Use ID Number”, only the XG-V10 Series, the XG-P20X or the XG-P25X projectors can be used.
- A computer with high processing capability is required to use the “Multiple Projector Operation Mode”. We recommend using the “Single Projector Operation Mode” to control a single projector.

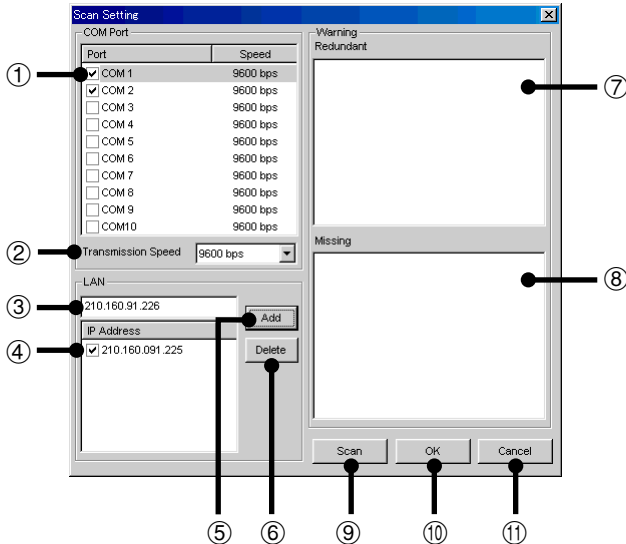
## Scan Setting

This function allows the software to automatically identify and control all the projectors connected to the PC without having to the ports and models. To use this function, the COM ports and IP address to be scanned with “Scan Setting” must be set beforehand.

For details and setting of “Scan Setting” see below.

### 1 Select “Scan Setting” from the “File” menu.

Set the projectors to be scanned here.



- ① COM port enable/disable check box

#### NOTE

The serial number is assigned when using multiple connections which do not use IDs.

- ② Set the COM port [Transmission Speed](#).
- ③ IP address input area
- ④ List of input IP addresses and enable/disable check box
- ⑤ Add button  
When clicked after inputting the IP address, the address is added to the list in ④.
- ⑥ Delete button  
When clicked after selecting the IP address in ④, that address is deleted.
- ⑦ List of projectors whose IDs are redundant.
- ⑧ List of projectors whose IDs are missing.
- ⑨ Scan button
- ⑩ OK button
- ⑪ Cancel button

## 2 Set the port to which the projector is connected.

- In ①, check the check box of the COM port to which the projector is connected.
- To use a LAN, input the IP address in ③, click the “Add” button, then check the check box in ④.

### NOTE

LAN connections are possible only with models from the XG-V10 series with the optional extension board (AN-L10T) installed.

## 3 Click the “Scan” button.

The connected projectors are identified.

### NOTE

- If projectors with the same IDs are discovered through scanning, the data for those projectors is displayed in the “Redundant” area. If this happens, reassign suitable IDs to the projectors.
- The results of scanning are compared with the pre-scanning All Projector List and the data for projectors that could not be confirmed as being connected is displayed in the “Missing” area.

## 4 Click “OK” if you wish to create an “All Projector List” based on the results of scanning.

If you do not wish to create an “All Projector List”, click “Cancel”.

### Deleting the set IP address

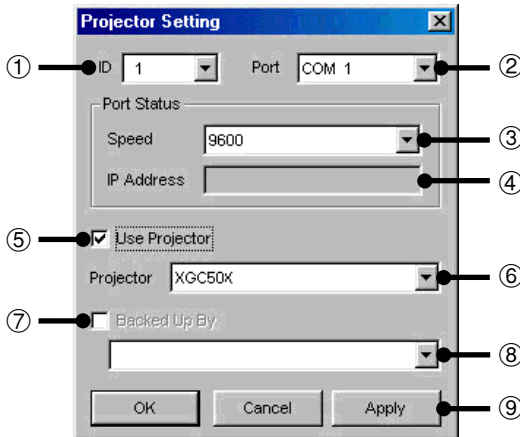
- 1 Select the IP address to be deleted in ④.
- 2 Click the “Delete” button.

## Projector Setting

When “Multiple Projector Operation Mode (Use ID Number)” is selected in “Operation Mode Setting”, it is possible to add projectors manually without using the scan setting automatic identification function. In addition, when “Multiple Projector Operation Mode (Don’t Use ID Number)” or “Single Projector Operation Mode” is selected, make the respective settings at “Projector Setting”.

### Multiple Projector Operation Mode

#### 1 From the “File” menu, select “Projector Setting”.



- ① Select the ID number.
- ② Select the port.
- ③ Select the transmission speed.
- ④ Input the IP address.
- ⑤ Enable/disable check box
- ⑥ Select the projector model.
- ⑦ Backup function enable/disable check box
- ⑧ Backup projector selection pull-down menu
- ⑨ Apply button.

#### 2 Select the ID number.

If selecting “Don’t use ID Number” in “Operation Mode Setting” ([page 25](#)), you don’t need to select the ID number here.

#### 3 Select the port to which the projector is connected.

If using the RS-232C connection, select a COM port to be used from “Port” pull-down menu.

If using the LAN connection, select “LAN”.

#### NOTE

LAN connections are possible only with models from the XG-V10 series with the optional extension board (AN-L10T) installed.

#### 4 Set the Port Status.

If using the RS-232C connection, select the transmission speed between the computer and the projector.

If using a LAN connection, input the projector's IP address.

#### NOTE

- Set the transmission speed here and confirm the transmission speed on the projector to the same speed.
- For instructions on the projector's transmission speed setting, refer to the projector's operation manual.

#### 5 Select the projector model and check the “Use Projector” check box.

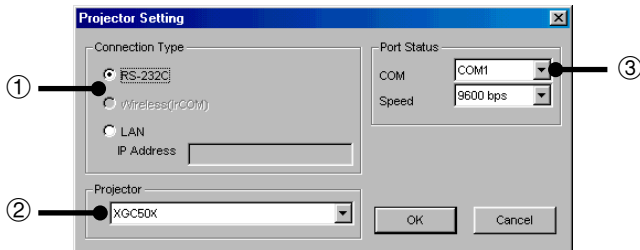
#### 6 Set the backup projector.

If necessary, set the backup projector. See [page 56](#) for details.

#### 7 Click the “Apply” button.

## Single Projector Operation Mode (For the connection via RS-232C or IrCOM)

### 1 From the “File” menu, select “Projector Setting”.

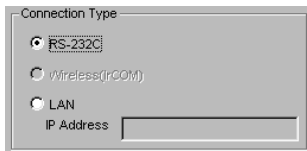


- ① Area for selecting the connection type
- ② Area for selecting the projector model
- ③ Area for COM port setup

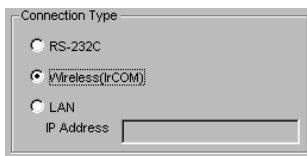
### 2 Select the projector model.

### 3 Select “RS-232C” or “Wireless (IrCOM)” in “Connection Type”.

- The following image is displayed when the RS-232C connection is selected.



- The following image is displayed when the Wireless (IrCOM) connection is selected.



#### NOTE

For the connection via IrCOM, only the NV5-7 projectors can be used.

### 4 Select the “COM” port to which the projector is connected.

- 5 Select the transmission speed between the computer and the projector.

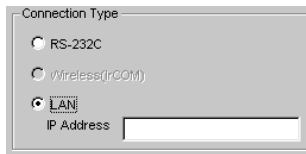
**NOTE**

- Set the transmission speed here and confirm the transmission speed on the projector for the same speed.
- For instructions on the projector's transmission speed setting, refer to the projector's operation manual.

- 6 Click the "OK" button.

## Single Projector Operation Mode (For the connection via LAN)

- 1 Repeat steps 1 and 2 in "Single Projector Operation Mode (For the connection via RS-232C or IrCOM)" (page 30).
- 2 Select "LAN" in "Connection Type".



- 3 Input the IP Address.
- 4 Click the "OK" button.


**NOTE**

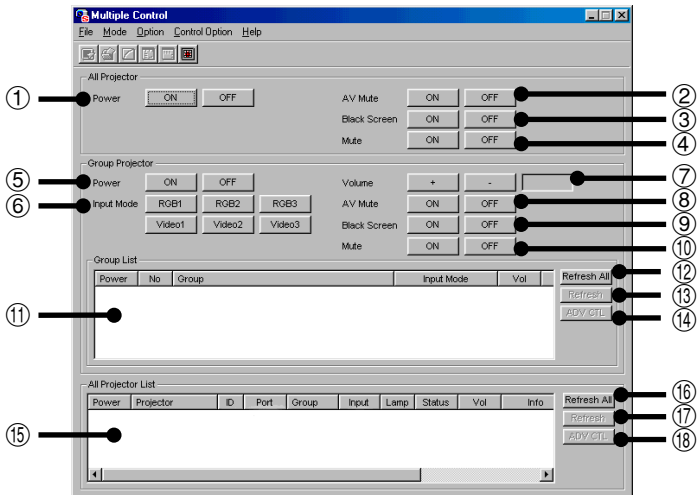
LAN connections are possible only with models from the XG-V10 series with the optional extension board (AN-L10T) installed.

# Controlling Multiple Projectors

## Multiple Control

This is a function for controlling multiple connected projectors (see [page 10](#)) from your computer. Depending on the connections, up to 250 projectors can be controlled.

- 1 Repeat steps 1-2 on “Selecting the Operation Mode” ([page 25](#)).
- 2 Select “Multiple Control” from the “Mode” menu or click the  icon on the menu bar.
  - ▶ The Multiple Operation Panel will open.



**All Projector:** Area for controlling all the connected projectors.

- ① Select the Power ON/OFF
- ② Select “AV Mute” ON/OFF  
The mute and black screen functions are conducted simultaneously.
- ③ To make “Black Screen” ON/OFF
- ④ Select “Mute” ON/OFF

### CAUTION

If the power of all the projectors is turned on at once, the power capacity in the facilities may be exceeded. To avoid this, this software is equipped with a function for making a setting for turning on the power of the projectors one at a time.



- 1 From the “Control Option” menu, select “Configuration”.
- 2 Select “ALL” if you want to turn on all the projectors at once or “Delayed” if you want to turn on the projectors one at a time in order.
- 3 Click the “OK” button.

**Group Projector:** This is for controlling grouped projectors one group at a time. The adjustment items in this frame are reflected for all the projectors in the selected group.

- ⑤ Select the Power ON/OFF
- ⑥ Select the “Input Mode” from RGB1 to 3, or Video 1 to 2.
- ⑦ To make “Volume” adjustment  
The volume of the projector with the lowest ID number in the group is displayed.
- ⑧ Select “AV Mute” ON/OFF
- ⑨ To make “Black Screen”
- ⑩ Select “Mute” ON/OFF
- ⑪ Group List : Displays a list of all the connected groups.

The information displayed in “Group List” is as follows:

- Power : When the power supplies of all the projectors belonging to the group are ON, the green icon is displayed. When they are OFF, the red icon is displayed.  
When the power supplies of some projectors are ON and others are OFF, the yellow icon is displayed.
- No : Group Number
- Group : Group Name
- Input Mode : Selected Input Mode
- Vol : Volume

**NOTE** 

In “Input Mode” and “Vol”, the value of the projector whose ID Number is the smallest of all the projectors belonging to the group, is displayed.

(When controlling the projectors without using an ID Number, the value of the projector whose COM Port Number is the smallest in the group is displayed.)

- ⑫ Refresh all the display information.
- ⑬ Refresh the display information for the selected group.
- ⑭ Jump to “Advanced Control for Adjustment” to conduct adjustments for the selected group.

**All Projector List:** All the identifiable connected projectors are listed here.

- ⑮ All Projector List: Displays a list of all the identifiable connected projectors.

The information displayed in “All Projector List” is as follows:

- Power : When the power supply of a projector is ON, the green icon is displayed. When it is OFF, the red icon is displayed. (For a projector assigned as a backup, “B” is attached to the icon.)  
When an error occurs in a projector, an “!” mark is displayed.
- Projector : Projector Name
- ID : ID Number
- Port : Port the projector is connected to (COM or LAN)
- Group : Group Name the projector belongs to
- Input : Selected Input Mode
- Lamp : Accumulative usage time of a lamp (when more than two lamps are used, the accumulative usage time of the longest used lamp is displayed) or remaining lamp life in percentage.
- Status : Status of a projector
- Vol : Volume
- Info : Resolution or signal type of a projected image
- COM : Transmission status (“OK” or “ERR”)
- Backup : When another projector stands by as a backup projector, the ID Number, Port and Projector Name of the backup projector are displayed. When a projector is assigned as the backup of another projector, the ID Number, Port and Projector Name of the projector which is backed up is displayed.

- ⑯ Refresh all the display information
- ⑰ Refresh the displayed information for the selected projector with the most recent information.
- ⑱ Jump to “[Advanced Control for Adjustment](#)” to conduct adjustments for the selected projector.

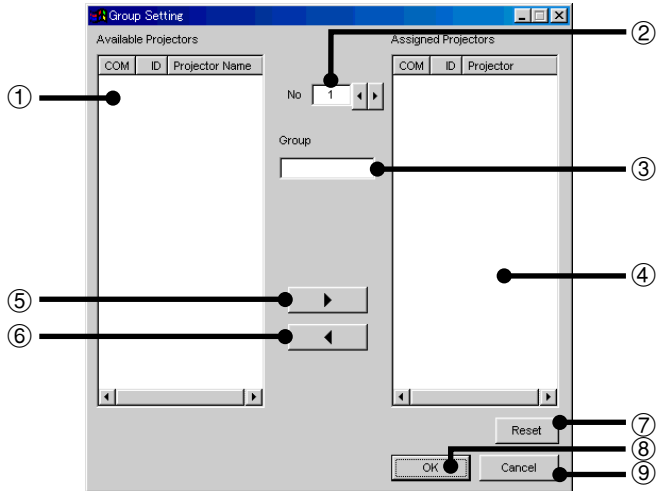
**NOTE** 

Some items may not be displayed, depending on the type of projector.

## Group Setting

Individual projectors not belonging to groups can be added to groups, and projectors belonging to groups can be removed from groups.

- 1 Select “Group Setting” from the “Control Option” menu.**  
▶ The “Group Setting” dialog box will open.



- ① List of available projectors  
Not displayed when projector names have not been set.
- ② Select Group No.
- ③ Input Group Name.  
32 characters can be input at maximum.
- ④ List of assigned projectors
- ⑤ Right arrow  
Adds the projector selected in the list of connected projectors to the group.
- ⑥ Left arrow  
Removes the projector selected in the list of projectors belonging to the group from the group.
- ⑦ Clears all the projectors belonging to the selected group.
- ⑧ Applies the setting.
- ⑨ Cancels the setting.

- 2 Select the group to be registered in the Group Number and Group Name input area.**
- 3 Select the projector in the list of available projectors.**
- 4 Click the right arrow button.**  
The selected projector is displayed in the list of assigned projectors.

**5** Click “OK”.**NOTE** 

One projector can be assigned to only one group at a time.

**To remove projectors belonging to groups from the group**

- 1** Select “Group Setting” from the “Control Option” menu.  
▶ The “Group Setting” dialog box will open.
- 2** Select Group No. by clicking ◀/▶.
- 3** Select the projector in the list of projectors belonging to the group.
- 4** Click the left arrow button.  
The selected projector is removed from the list of projectors belonging to the group.

**NOTE** 

To remove all the projectors belonging to a group, click the “Reset” button after selecting the group number in step 2.

**To delete a group**

- 1** Select “Group Setting” from the “Control Option” menu.  
▶ The “Group Setting” dialog box will open.
- 2** Select Group No. by clicking ◀/▶.
- 3** Click the “Reset” button.
- 4** Delete the group name displayed in the Group Name input section.
- 5** Click “OK”.

## Password Setting

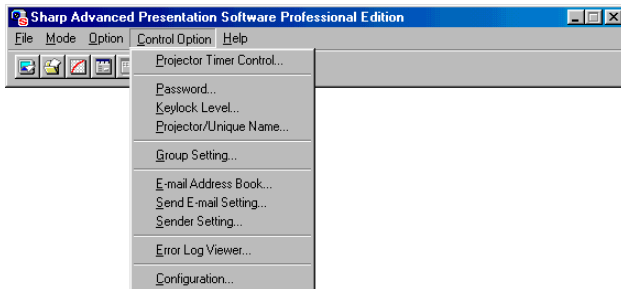
This function protects the Keylock Level and the Unique Name from changes by other users.

**NOTE**

This function works with the following models:  
PG-C30X, PG-C45 Series, XG-C40X, XG-C50X, XG-P10X, XG-P20X,  
XG-P25X, XG-V10 Series.

### Setting the Password

- 1 From the “Control Option” menu, select the “Password”. The “Set Projector Password” dialog box will open.



- 2 Enter a 4-digit password using the keyboard into “New Password” in the “Set Projector Password” dialog box. When using the Multiple Projector Operation Mode, select the “ID number” or “COM port number” before performing the above operation.



- 3** Enter the 4-digit password using the keyboard into “Reconfirm” on the “Set Projector Password” dialog box. Check the “Save Password” check box if you want to save the password.
- 4** Click “OK”.

**NOTE** 

After setting the password, be sure to write it down in a secure location so as not to forget it.

## Changing the Password

- 1 From the “Control Option” menu, select “Password”.
- 2 Enter the 4-digit old password using keyboard into “Old Password” on the “Set Projector Password” dialog box. When using the Multiple Projector Operation Mode, select the “ID number” or “COM port number” before performing the above operation.

The screenshot shows a dialog box titled "Set Projector Password". At the top, there is a dropdown menu. Below it, the "Old Password" field contains "\*\*\*\*". The "New Password" and "Reconfirm" fields are empty. There is an unchecked checkbox for "Save Password". At the bottom, there are three buttons: "OK", "Cancel", and "Apply".

- 3 Enter the 4-digit new password using keyboard into the “New Password” and “Reconfirm” on the “Set Projector Password” dialog box. Check the “Save Password” check box if you want to save the password.

The screenshot shows the same "Set Projector Password" dialog box. In this step, the "New Password" and "Reconfirm" fields now also contain "\*\*\*\*". The "Save Password" checkbox remains unchecked. The "OK", "Cancel", and "Apply" buttons are still present at the bottom.

- 4 Click “OK”.

### NOTE

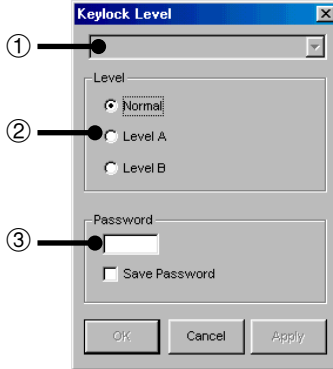
The password setting is canceled when “OK” is clicked if nothing is entered into the “New Password” and “Reconfirm” area.

## Selecting the Keylock Level

This function can be used to lock the use of certain operation buttons on the projector.

### 1 From the “Control Option” menu, select “Keylock Level”.

- ▶ The “Keylock Level” dialog box will open.



- ① Select the ID number/COM Port number.
- ② Keylock Level selection area
- ③ Password Input area

### 2 Select the Keylock level from “Normal”, “Level A” or “Level B”.

When using the Multiple Projector Operation Mode, select the “ID number” or “COM Port number” before performing the above operation.

See the diagram on the next page for the description of Keylock Levels.

### 3 Input the password.

When the password has been set in the projector, the “Password Input area” is displayed. Once displayed, enter the password.



## 4 Click “OK” or “Apply”.

### Description of Keylock Levels

Selected item	Description
Normal	All operation buttons are functional.
Level A	Only INPUT, VOLUME, MUTE on the projector are available.
Level B	All operation buttons on the projector are unavailable.

**NOTE** 

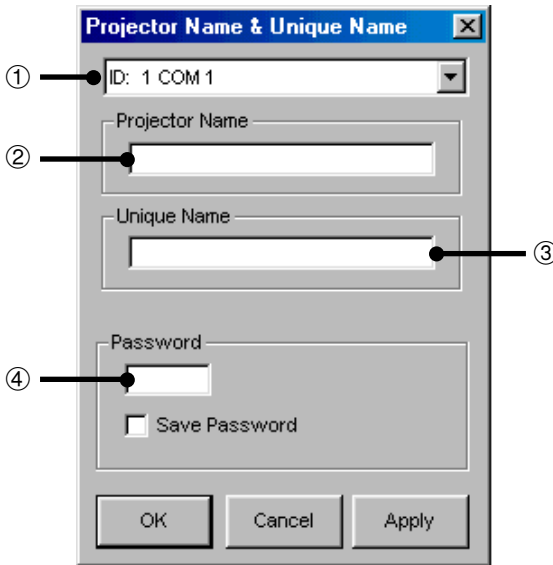
The projector can still be fully operated with either the remote or this software while using the Keylock function.

## Projector Name and Unique Name Setting

Names can be given to multiple connected projectors using IDs. When giving names, it is possible to select “Unique Name” with a password or “Projector Name” without a password.

### 1 Select “Projector/Unique Name” from the “Control Option” menu.

► The “Projector Name & Unique Name” dialog box will open.



- ① Select the ID number/COM Port number.
- ② Projector Name Input area  
A maximum of 12 characters can be entered.  
If already set, the set projector name is displayed.
- ③ Unique Name Input area  
A maximum of 12 characters can be entered.  
If already set, that unique name is displayed.
- ④ Password Input area

### 2 Select the Projector ID by clicking ▼.

### 3 Input the new name in the “Projector Name Input area” or “Unique Name Input area”.

#### 4 Input the password.

When the password has been set in the projector, the “Password Input area” is displayed. Once displayed, enter the password.

#### 5 Click “OK” or “Apply”.

##### NOTE

- The “Projector Name” is a name for facilitating identification of the individual projectors when controlling multiple projectors. We recommend entering the projector’s model name, the place where it is installed, etc., in “Projector Name”.
- The “Unique Name” does not affect projector control. It is protected by the password set on [page 37](#). (Only those who know the password can change it.)

We recommend inputting the name of the projector’s owner, etc., at “Unique Name”.

## E-mail Sending Function

This software makes it possible to automatically send an e-mail message containing information concerning errors to a preset e-mail address should projector errors be detected. In addition to automatically sending e-mail messages when errors arise, it is also possible to periodically send e-mail messages containing information on the projector status.

### NOTE

- The PC setting for e-mail (e.g., LAN connection setting or Dial-up connection setting) at first is needed to use this function.
- The information is attached to the e-mail messages as files in CSV format.
- This function can only be used when this software is running on a personal computer.
- This e-mail is sent by connecting to the server through an SMTP (Simple Mail Transfer Protocol).

## Sender Setting

Make the e-mail sender's settings here.

- ① E-mail (SMTP) server name input area
- ② Sender e-mail address input area
- ③ Sender name input area
- ④ Sender information input area

## Sender settings

- 1** Input the E-mail (SMTP) server name to be used when sending e-mail in the “E-mail (SMTP) server name input area”.
- 2** Input the sender’s e-mail address in the “Sender e-mail address input area”.
- 3** Input the e-mail sender’s name in the “Sender name input area”.
- 4** Input information concerning the sender in the “Sender information input area”.
- 5** Click the “OK” button.

**NOTE** 

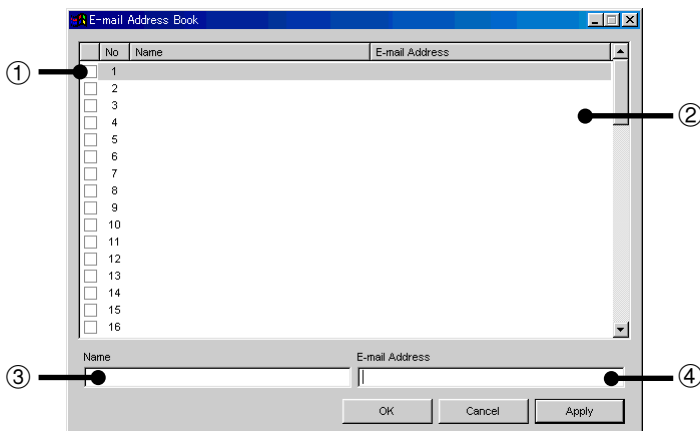
- The E-mail (SMTP) server name and e-mail address may vary depending on your network environment. Consult your Network Administrator for details.
- You can enter any name for Sender Name in “Sender name input area” or any details for Sender Information in “Sender information input area”.

## E-mail Address Book Setting

Make here the settings for the “Projector Condition” e-mail messages (for sending periodic e-mail messages on the projector status) and the “Projector Error” e-mail messages (for notifying that errors have occurred).

### E-mail message recipient address setting

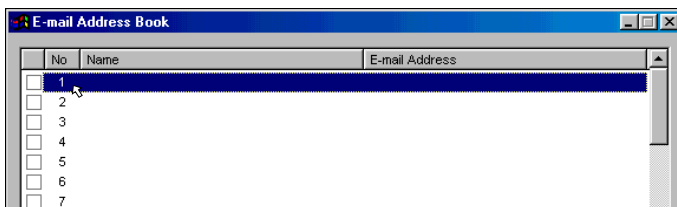
- 1 Select “E-mail Address Book” from the “Control Option” menu.



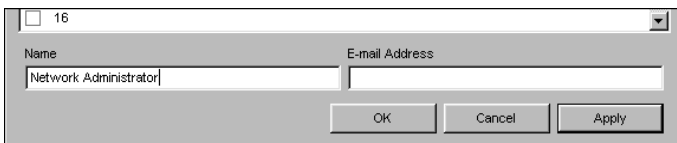
- ① The Enable/Disable check boxes.  
If the Enable/Disable check boxes have been selected, e-mail will be sent to the address entered in ②
- ② E-mail recipient list
- ③ Recipient name input area  
Enter the name of the recipient
- ④ Recipient e-mail address input area

## Registering the recipient's e-mail address

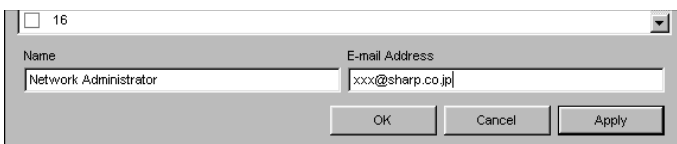
- 1 Click the number you want to register as the new recipient e-mail address.



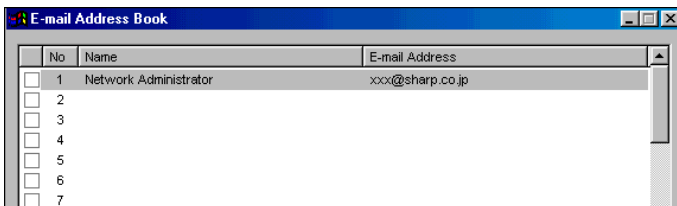
- 2 Enter the name of the recipient in “Recipient name input area”.



- 3 Enter the e-mail address of the recipient in “Recipient e-mail address input area”.

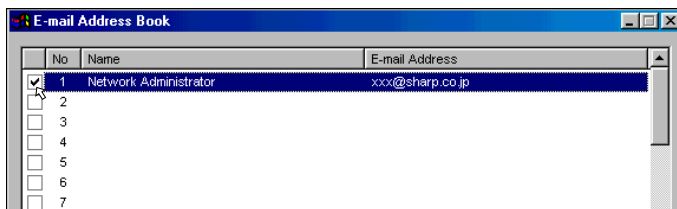


- 4 Click the “Apply” button.  
The e-mail address is added to the “E-mail recipient list”.



## Specifying the recipient's e-mail address

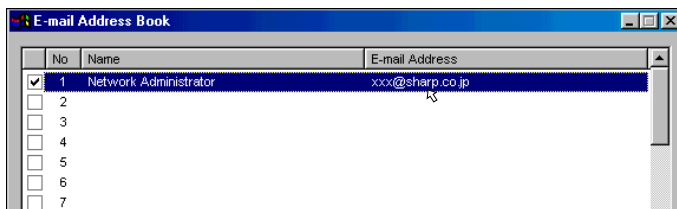
- 1 Select the check box of the e-mail address you want to specify as the recipient.



- 2 Click the “Apply” button.

## Changing the registered recipient's e-mail address

- 1 Click the e-mail address you want to change.

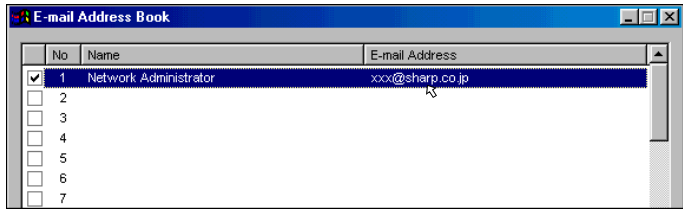


- 2 Enter the new information in “Recipient name input area” or “Recipient e-mail address input area”.
- 3 Click the “Apply” button.  
The new name or e-mail address is displayed.

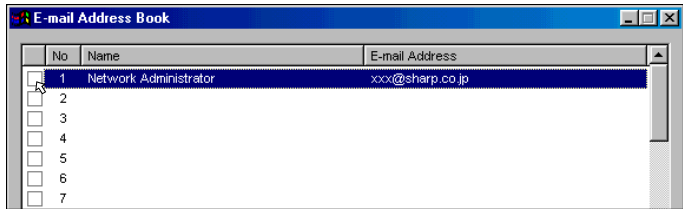


## Deleting the registered recipient's e-mail address

- 1 Select the e-mail address you want to delete.



- 2 Clear the check box if there is a check mark in it.



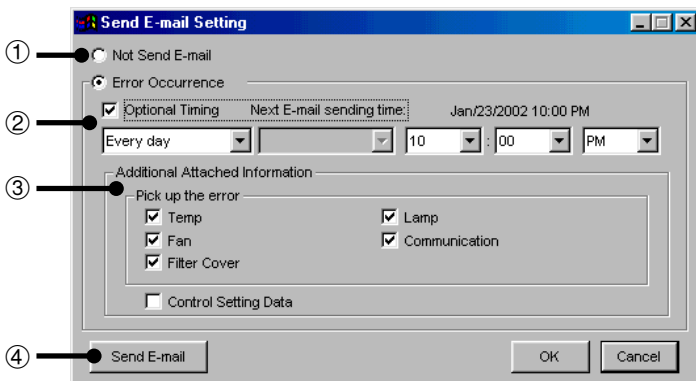
- 3 Use the “Delete” key on the Keyboard to delete all information in “Recipient name input area” or “Recipient e-mail address input area”.



- 4 Click the “Apply” button.

## Send E-mail Setting

Set here the timing at which e-mail messages are to be sent and the information to be attached to the e-mail messages.



- ① Area for selecting whether or not to send e-mail messages automatically
- ② Area for setting the timing at which periodic e-mail messages are to be sent
- ③ Area for setting additional attached information
- ④ Button for sending "Projector Condition" e-mail messages manually

## Automatic e-mail sending function settings

- If you wish e-mail messages to be sent automatically when projector errors occur: Select “Error Occurrence”.
- If you do not wish e-mail messages to be sent automatically, select “Not Send E-mail”.

### NOTE

The information sent when errors occur is as follows:

DATE	:	Date e-mail sent
TIME	:	Time e-mail sent
ID	:	Projector ID number
PORT	:	Port to which projector is connected
GROUP	:	Name of group to which projector belongs
MODEL	:	Projector’s model name
S/N	:	Projector’s serial number
ERROR	:	Type of error

- In the above information, the content displayed varies depending on the model.

## Periodic e-mail sending function settings

- 1 If you wish e-mail messages on the projector’s conditions to be sent automatically, check the “Optional Timing” check box.**
- 2 Select the timing at which e-mail is to be sent.**  
Select one of the following four timings:  
“Every day”, “Every week”, “Every two weeks” or “Every month”.  
If “Every week” or “Every two weeks” is selected, also select the day of the week. If “Every month”, also select the day of the month.
- 3 Set the time at which the e-mail messages are to be sent.**

### NOTE

The information sent when errors occur is as follows:

DATE	:	Date e-mail sent
TIME	:	Time e-mail sent
ID	:	Projector ID number
PORT	:	Port to which projector is connected
GROUP	:	Name of group to which projector belongs
MODEL	:	Projector’s model name
S/N	:	Projector’s serial number
CONDITION	:	Projector’s status
LAMP	:	Accumulated lamp usage time or remaining lamp life in percentage
TEMP_AVR.	:	Projector’s average internal temperature

- In the above information, the content displayed varies depending on the model.

## Settings for additionally attached files

By making the settings described below, it is possible to attach files containing information on individual projectors in which errors have occurred and files containing information on the user settings of all connected projectors in addition to the CSV files that are attached to the periodically sent e-mail messages.

- When the “Temp” check box is checked, a CSV file containing information on projectors whose internal temperatures are high is attached.
- When the “Fan” check box is checked, a CSV file containing information on projectors whose internal cooling fans present some sort of irregularity is attached.
- When the “Filter Cover” check box is checked, a CSV file containing information on projectors whose filter covers are not mounted properly is attached.
- When the “Lamp” check box is checked, a CSV file containing information on projectors whose light source lamps present some sort of irregularity is attached.
- When the “Communication” check box is checked, a CSV file containing information on projectors for which communication with the computer is not possible is attached.
- When the “Control Setting Data” check box is checked, a data file containing all the user settings (“Contrast”, “Input select”, etc.) is attached. (The user settings are the same as the settings obtained using the “[Save Control Setting](#)” function. The file has the extension “lcd”.)

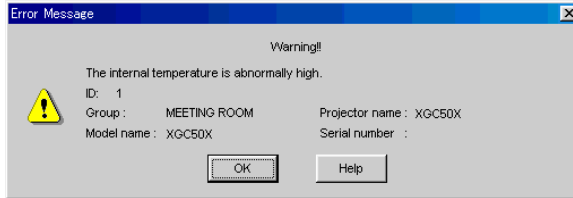
## Sending the “Projector Condition” e-mail message manually

Click “Send E-mail” to send an e-mail message containing information on the projector conditions manually.

## Error Notification Function

This software is equipped with a function for automatically notifying the computer running the SAPS software with error information when an error arises with the projector.

If a major error arises, a warning window is displayed, as shown below.



When the “Help” button is clicked, the “Help” window opens.

### NOTE

- The Occurrence and Timing settings can be customized at “Send E-mail Setting” (page 50). Projector information is then forwarded either when problems arise or periodically according to the configuration.
- If your projector is an XG-V10 Series, the XG-P20X or the XG-P25X projector, a warning window is immediately displayed whenever errors occur.
- If your projector is a model other than the XG-V10 Series, the XG-P20X or the XG-P25X, some time (up to about 3 minutes) is required from when the error occurs until the warning window is displayed.

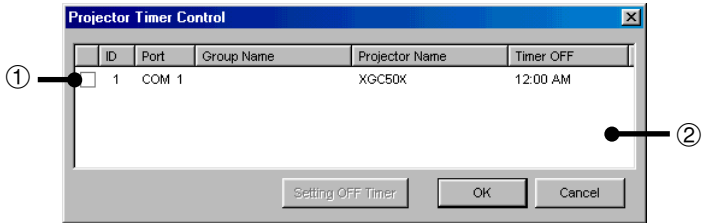
# Projector Timer Control

This function is for turning off the projector's power at a preset time.

## NOTE

- This function can only be used when this software is running on a personal computer.
- This function manages the time based on the computer's built-in clock, so it will not operate properly if the computer's clock setting is incorrect.

- 1 Select "Projector Timer Control" from "Control Option".**  
The "Projector Timer Control" dialog box will open.



- ① Enable/disable check box
- ② List of all connected projectors

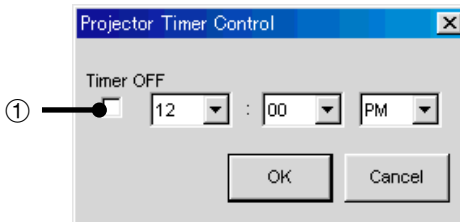
- 2 Click on the projector for which you want to set the timer.**

## NOTE

Multiple projectors can be selected by pressing the keyboard's control or shift key while selecting the projectors.

- 3 Click "Setting OFF Timer".**

The "Projector Timer Control" dialog box will open.



- ① Enable/disable check box

- 4** Set the time you want the timer to turn off.
- 5** Check the “Enable/disable check box”.
- 6** Click “OK”.

## Backup Function

This function automatically turns on the projector assigned in advance as the backup projector, when the projector goes into standby due to a malfunction.

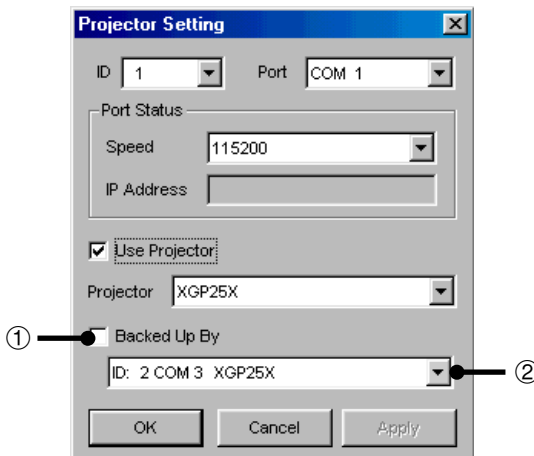
When the backup projector autostarts, the settings of the projector in which the error occurred are suitably sent to the backup projector, therefore the interruption of the presentation is reduced to a minimum.

### NOTE

- This function can only be used when this software is running on a personal computer.
- This function can only be used with the XG-V10 Series, the XG-P20X or the XG-P25X.
- The backup projector will restart in the event of the following errors.
  - Internal temperature error
  - Cooling fan error
  - Filter cover error
  - Lamp burnout error
- The settings sent from the projector in which the error occurred to the backup projector are as follows:
  - The selected INPUT
  - Signal Type information (RGB/COMPONENT/VIDEO)
  - RESIZE information (Aspect ratio)
  - Special Mode information
  - Video System information
- Assign a projector that is normally in the standby mode as the backup projector. Note that images other than the ones you expect may be displayed when the backup function is activated if a projector that is normally used is accidentally assigned as the backup projector.

## Backup Function Settings

### 1 Select “Projector Setting” from the “File” menu.



- ① Backup function enable/disable check box
- ② Backup projector selection pull-down menu

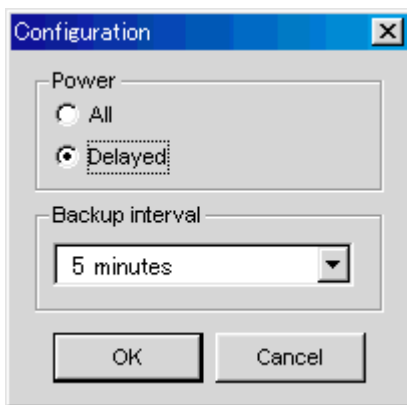


- 2 **Make the settings for the projector for the side to be backed up.**  
Refer to [page 58](#) to make the settings for the projectors to be backed up.
- 3 **Check the “Backup function enable/disable check box”.**
- 4 **Select the projector to be assigned as the backup projector.**  
Select the projector from the projector selection pull-down menu.
- 5 **Click the “Apply” button.**

## Interval Time Setting

With this software, the projectors' internal data is collected periodically at preset intervals so that the backup function can work. Set this interval here.

- 1 **Select “Configuration” from “Control Option”.**



- 2 **Select the desired interval in “Backup interval” on the “Configuration” window.**
- 3 **Click the “OK” button.**

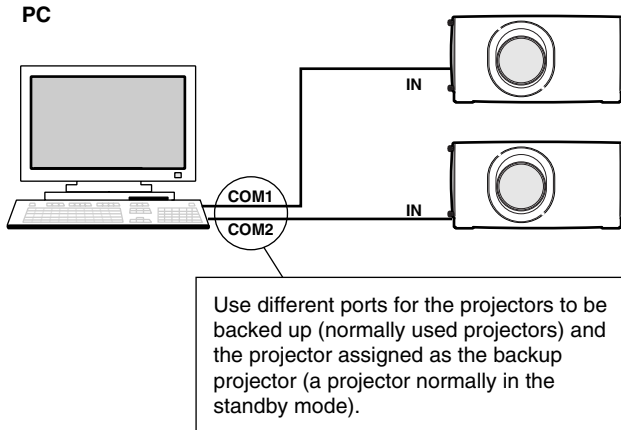
### NOTE

When several projectors have been set to be backed up, the data of one projector will be collected in order at each backup interval that is set in advance.

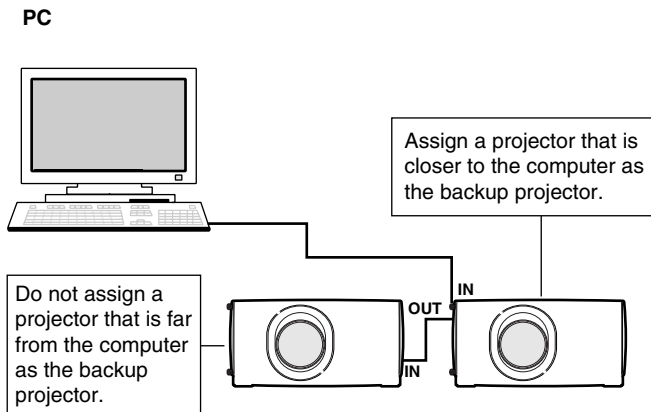
For example, if the backup interval has been set to 5 minutes and 3 projectors have been set to be backed up, the data of the first projector will be collected. After 5 minutes have elapsed, the data of the second projector will be collected. Again after 5 minutes, the data of the 3rd projector will be collected. 5 minutes later, the data of the first projector will be collected again and the data collection procedure will repeat itself as above.

**NOTE****Recommended connections for using the backup function**

- When using the backup function, we strongly recommend connecting the projectors to separate ports rather than in a daisy chain as shown on the diagram below.



- When the projectors are connected in a daisy chain, assign a projector that is closer to the computer as the backup projector, as shown on the diagram below. (The backup function may not work properly if a projector that is far from the computer is assigned as the backup projector.)



## Resetting after the backup function has been activated

If a problem occurs with a projector and the backup function has been activated, use the procedure described below to eliminate the problem with the projector and reset the backup function.

- 1 Select the projector in which the problem occurred at “Projector Setting”.**
- 2 Clear the “Use Projector” check box, then click the “Apply” button.**  
The “Backed Up By” check box is automatically cleared at this time.
- 3 Eliminate the problem with the projector.**
- 4 After the problem is eliminated, select that projector in “Projector Setting” and select “Use Projector”.**
- 5 Check that a suitable projector is selected as the backup projector, then select the “Backed Up By” check box.**
- 6 Click the “Apply” button.**

## Controlling the Projector's Adjustment

### Advanced Control for Adjustment

---

This function enables you to control the individual projector adjustments from your PC.

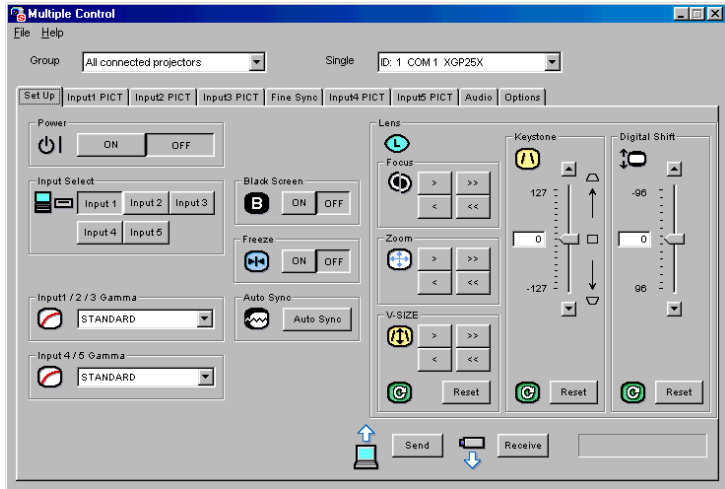
Refer to the projector's operation manual for details on each adjustment.

#### NOTE

- Adjustments can still be made from the **Advanced Control for Adjustment** utility regardless of the difference in settings in the projector's menu.
- If you move to **Advanced Control for Adjustment** during **Presentation Transfer, Capture & Transfer** or **Gamma Correction**, **Sharp Advanced Presentation Software Professional Edition** automatically confirms the adjustments on the projector and shows them in the **Advanced Control for Adjustment** window as default settings.
- Also when you change the sheet of the **Advanced Control for Adjustment** window to proceed to the other projector adjustment, this confirmation is performed. In this case, it will repeat at regular intervals afterwards and the **Advanced Control for Adjustment** window may show the settings on the projector.
- The Automatic Power Shutoff function will not operate when performing **Advanced Control for Adjustment**, although you turn "**Auto Power Off**" ON in the "**Options**" sheet. This function operates during **Presentation Transfer, Capture & Transfer**, or **Gamma Correction**.

## Multiple connections

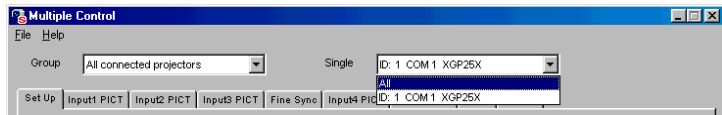
- 1 Select individual or group projectors you want to control on the Multiple Operation Panel.
- 2 Click “Multiple Control” on the Multiple Operation Panel.  
▶ The “Multiple Control” window will open.



- 3 Select the projector which you want to control.
  - You can select all connected projectors or individual projectors when “All connected projectors” is selected in the “Group” pull down menu.

### NOTE

When you select “All connected projectors” in the the “Group” pull down menu, “All” and the list of all connected projectors are enumerated in the “Single” pull down menu.

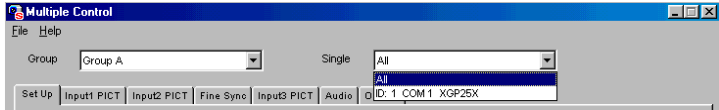


- You can select all or individual projectors belonging to a group, when “Group A\*” is selected in the “Group” pulldown menu.

**NOTE** ►

When you select “Group A\*” in the “Group” pulldown menu, “All” and the list of all projectors which belong to “Group A” are enumerated in the “Single” pull down menu.

- \* You can select other projector groups not only Group A but also Group B, C, etc..



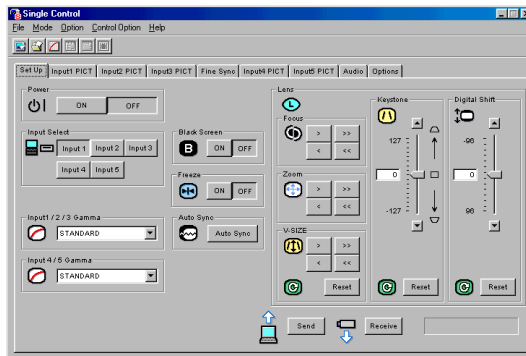
- 4 Click the tab of the sheet that includes your desired adjustment controller.

## Single connection

- 1 Select the “**Single Control**” mode.

See section “Opening Modes” (page 20).

- The “**Single Control**” window will open.



- 2 Click the tab of the sheet that includes your desired adjustment controller.

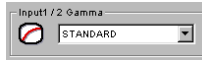
## Basic Operation of the Adjustment Sheet

### Button icon



You can set the adjustment item by clicking the button icon (Eg; “Power ON/OFF”, “Auto Sync”, etc.).

### Pull down menu



You can set the adjustment item by selecting the desired setting from the pull down menu (Eg; Gamma, etc.).

### Slide bar



You can adjust the item by dragging the slide bar or entering the desired value (Eg; Contrast, etc.).

### Sending all adjusted data on the sheet to the projector.



Click the “Send” button to control all the adjustments on the sheet.

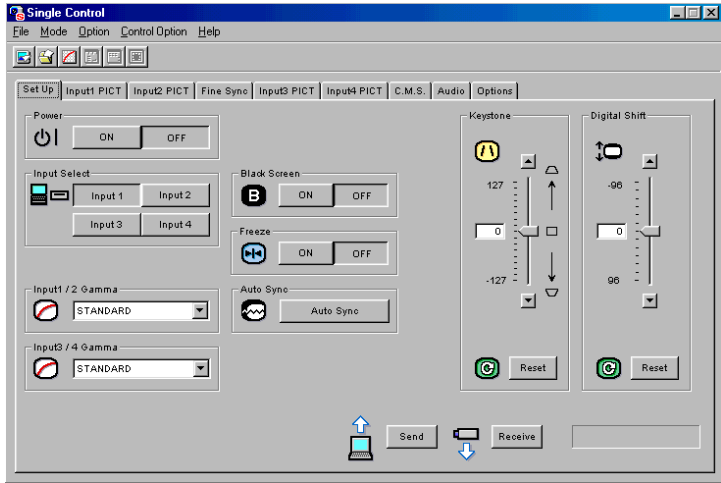
### Receiving the adjusted data from the projector



Click the “Receive” button to confirm the adjustments on the projector.

## “Set Up” Adjustment

E. g. The display below is the one that appears when used with the XG-C50X projector.



You can perform the adjustments, settings or functions below on this sheet.

**Power ON/OFF, Input Select Gamma, Focus, Keystone, Lens Shift, Digital Shift, Zoom, V-Size, Black Screen ON/OFF, Auto Sync, Freeze ON/OFF**

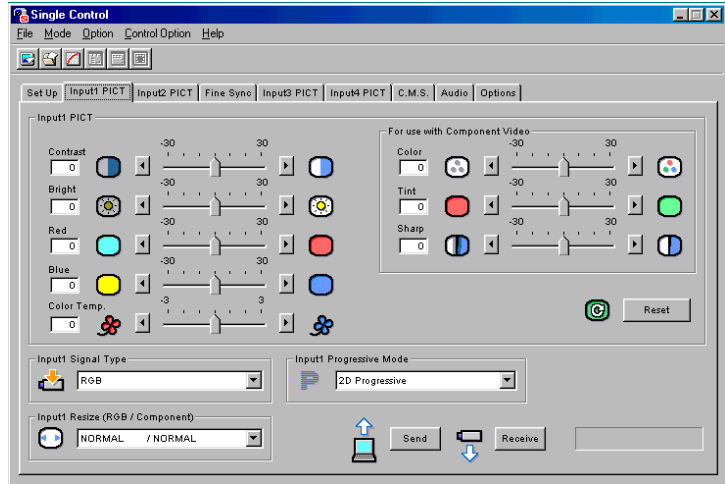
### NOTE

- Some items may not be controlled depending on the projector model to be controlled.
- Refer to the projector's operation manual for details on each adjustment.



## “Input PICT” Adjustment

E. g. The display below is the one that appears when used with the XG C50X projector.



You can perform the adjustments, settings or functions below on this sheet:

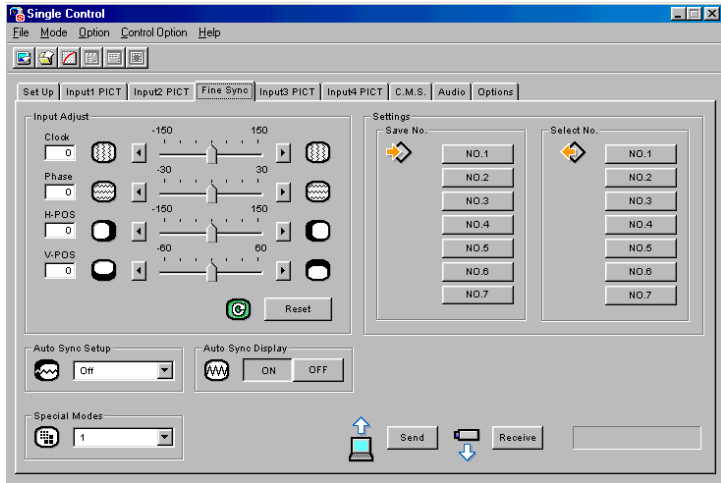
**Contrast, Bright, Red, Blue, Color Temp, Color, Tint, Sharp, Signal Type, Resize, Progressive Mode**

### NOTE

- Some items may not be controlled depending on the projector model to be controlled.
- Refer to the projector’s operation manual for details on each adjustment.

## “Fine Sync” Adjustment

E. g. The display below is the one that appears when used with the XG-C50X projector.



You can perform the adjustments, settings or functions below on this sheet:

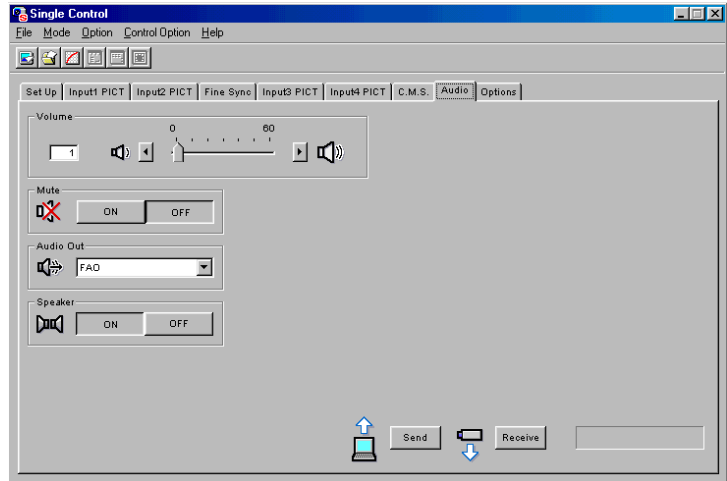
**Clock, Phase, H-POS, V-POS, Auto Sync Setup ON/OFF, Special Modes, Auto Sync Display ON/OFF, Save No., Select No.**

### NOTE

- Some items may not be controlled depending on the projector model to be controlled.
- Refer to the projector’s operation manual for details on each adjustment.
- “**Fine Sync**” adjustment is not necessary except “**Auto Sync Setup**” and “**Special Modes**” with Input3 (DVI) mode when using the DVI digital RGB input terminal. (The “**Input Adjust**” and “**Settings**” items cannot be adjusted.)
- Make a note of the “**Save No.**” and its stored setting, if necessary. You cannot check each setting with this software after saving it.
- The previous setting will be overwritten if you save on the same “**Save No.**” button.

## “Audio” Adjustment

E. g. The display below is the one that appears when used with the XG-C50X projector.



You can perform the adjustments, settings or functions below on this sheet:

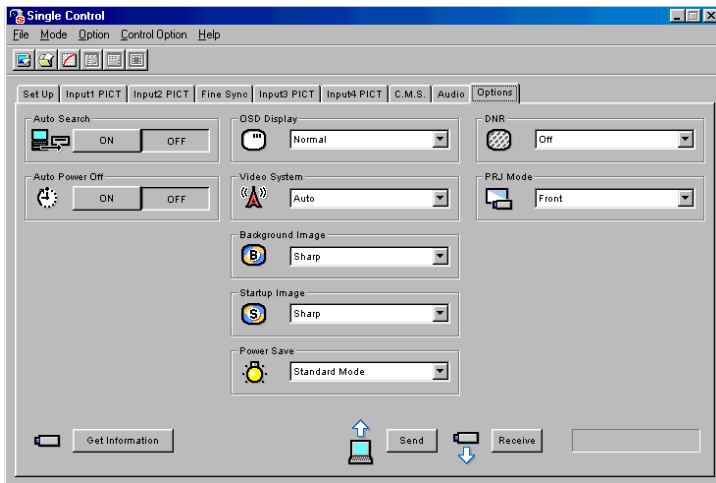
**Balance, Treble, Bass, Audio Out, Speaker ON/OFF, Volume, Mute ON/OFF**

### NOTE

- Some items may not be controlled depending on the projector model to be controlled.
- Refer to the projector’s operation manual for details on each adjustment.

## “Options” Adjustment

E. g. The display below is the one that appears when used with the XG-C50X projector.



You can perform the adjustments, settings or functions below on this sheet:

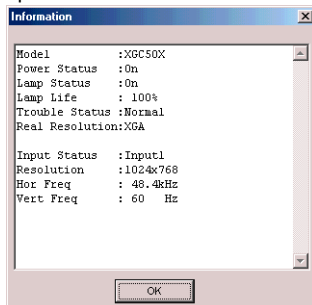
**DNR ON/OFF, Auto Power Off (Automatic Power Shutoff) ON/OFF, OSD Display, Video System, Background Image, Startup Image, PRJ Mode, Set Inputs, Power Save Mode**

### NOTE

- Some items may not be controlled depending on the projector model to be controlled.
- Refer to the projector's operation manual for details on each adjustment.
- The Automatic Power Shutoff function will not operate when performing **Advanced Control for Adjustment**, although you set it "ON". This function operates during **Presentation Transfer, Capture & Transfer, or Gamma Correction.**

### Getting Information of projector

Click the "Get Information" (Lamp & Signal information) button to open the "Information" window.



**“Model”**

Shows the model number of the projector.

**“Power Status”**

On: The power is on.

Off: The power is off.

Cooling: The power is off with the cooling fan turning. Do not disconnect the power cord during “Cooling”.

**“Lamp Status”**

On: The lamp is on.

Off: The lamp is off.

Retry: Retrying to turn on the lamp.

Wait: Checking if the lamp is on.

**“Lamp Timer”**

Shows the accumulated lamp usage time. It will be reset when replacing the lamp.

**“Lamp Life”**

Shows the remaining lamp life in percentage. It will be reset when replacing the lamp.

**“Trouble Status”**

Temp.: The internal temperature is abnormally high. Something may be blocking the air intake.

Fan: The filter cover is open. Securely install the filter cover.

Lamp: The lamp has a problem.

Normal: Displayed in the normal operating condition.

**“Real Resolution”**

Shows the resolution of the projector’s panel.

**“Input Status”**

Shows the selected INPUT.

**“Resolution”**

Shows the resolution of the computer image when projected on the screen.

This item will not be displayed when using the t-%eo source (NTSC or PAL).

**“Hor Freq”**

Shows the horizontal frequency (kHz).

This item will not be displayed when using the video source (NTSC or PAL).

**“Vert Freq”**

Shows the vertical frequency (Hz).

This item will not be displayed when using the video source (NTSC or PAL).

**“Video System”**

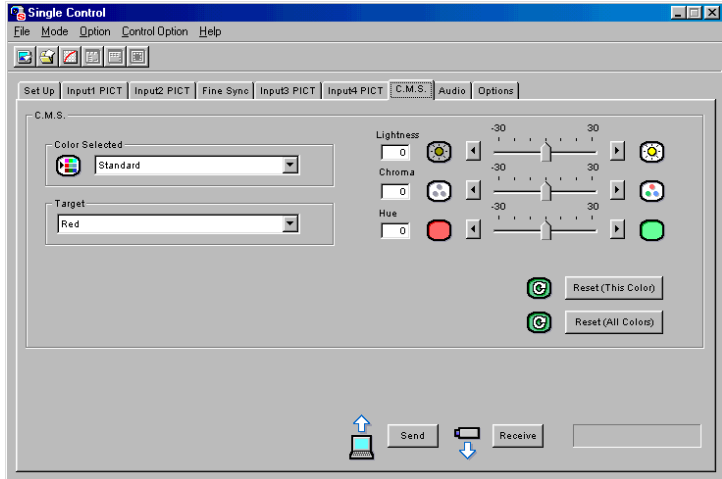
Shows the video input system (NTSC or PAL etc.). “---” will be displayed when the signal is a monochrome or when there is no signal. For a forced system, an “\*” will be at the start of the system name.

**NOTE** 

Some items may not be displayed depending on the projector model.

## “C.M.S” Adjustment

E. g. The display below is the one that appears when used with the XG-C50X projector.



You can perform the adjustments, settings or functions below on this sheet:

**Color Selected, Target, Lightness, Chroma, Hue**

### NOTE

- Some items may not be controlled depending on the projector model to be controlled.
- Refer to the projector's operation manual for details on each adjustment.

## Save Control Setting and Load Control Setting

You can save all the current **Advanced Control for Adjustment** settings of the projector in your PC (**Save Control Setting**) and also load the **Advanced Control for Adjustment** settings saved in the PC to the projector (**Load Control Setting**).

### To make “Save Control Setting”

Click the “File” menu to select “Save Control Setting”.

All the current **Advanced Control for Adjustment** settings of the projector will be saved in the SAPS folder in the PC.

### To make “Load Control Setting”

Click the “File” menu to select “Load Control Setting”.

The **Advanced Control for Adjustment** values will be loaded to the connected projector.

#### NOTE

- You cannot use this function when “XGNV1-5” is selected in “Projector Setting” dialog box.
- The projector must be identical for the “Save Control Setting” and “Load Control Setting”.


# Video Wall Setting

With this software, the image from the connected projectors can be divided from  $2 \times 2$  to up to  $8 \times 8$  to create a video wall.

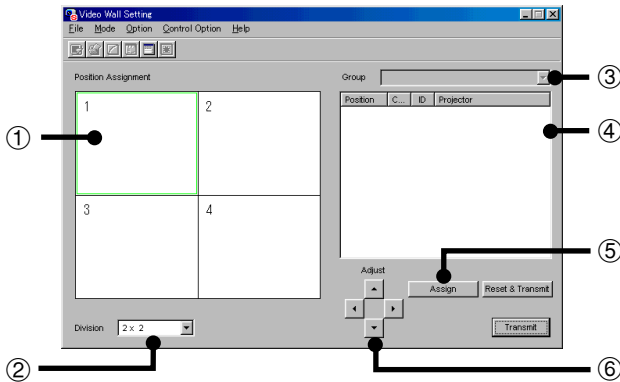
## NOTE

- This function is not available when UXGA signals are displayed.
- This function can only be used with the XG-V10 Series, the XG-P20X and the XG-P25X.
- The projector forming a video wall must belong to a group. To assign a projector not belonging to a group, add the projector to one of the groups. (See [page 35](#).)

## 1 Click “Video Wall Setting” in the “Mode” menu.

You can also select “Video Wall” by clicking the  icon.

▶ The “Video Wall Setting” window will open.



- ① Area assigned to the selected projector
- ② Select “Division”.
- ③ Select “Group Name”.
- ④ Projector selection area
- ⑤ Assign the projector.
- ⑥ Adjust: The position of the assigned projector can be adjusted in the horizontal (H) and vertical (V) directions by clicking ▲, ▼, ◀ and ▶.

## 2 Select the group.

## 3 Select “Division”.

## 4 Select the position to assign in “Position Assignment”.

## NOTE

For the relationship between the position assigned here and the actual position of the projector, see “Projector image assignment with the Video Wall Setting” on [page 74](#).



- 5** Select the projector in the **Projector selection area**.
- 6** Click **“Assign”**.  
The projector is assigned as a video wall component.
- 7** Click **“Transmit”**.

### To fine-adjust the vertical and horizontal position

- 1** Select the image you want to fine-adjust in **“Position Assignment”**.
- 2** Adjust the image position using **▲, ▼, ◀** and **▶** buttons.

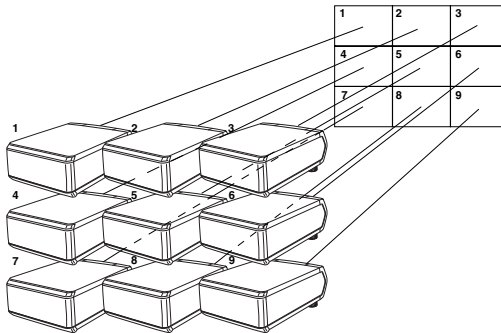
### To reset the current assignment settings

- 1** Select the projectors whose assignment you want to cancel in **“Projector Selection area”**.
- 2** Click **“Reset & Transmit”**.  
The Video Wall Setting of the selected projectors is canceled.

## Projector image assignment with the Video Wall Setting

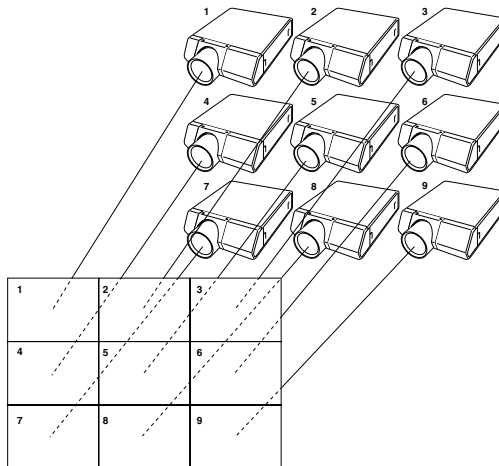
The projector image assignment for front projection and rear projection is shown below.

### Front projection



1 to 9 correspond to position numbers on the screen.

### Rear projection

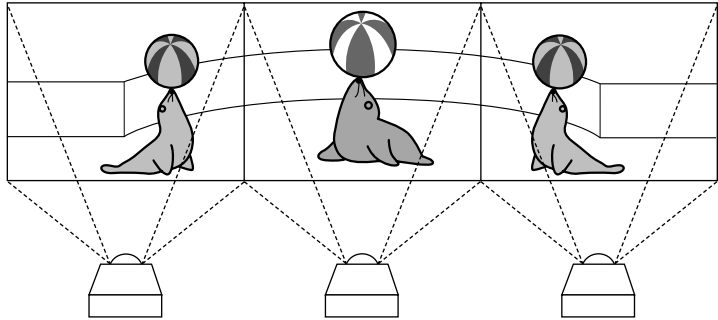


1 to 9 correspond to position numbers on the screen.

## Settings and considerations regarding the Wide Video Wall

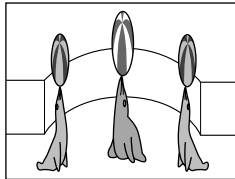
The Wide Video Wall can be implemented when choosing from  $2 \times 1$ ,  $3 \times 1$ ,  $4 \times 1$ ,  $5 \times 1$ ,  $6 \times 1$ ,  $7 \times 1$ ,  $8 \times 1$  in "Division" (page 72).

### Example of the Wide Video Wall setting ( $3 \times 1$ )



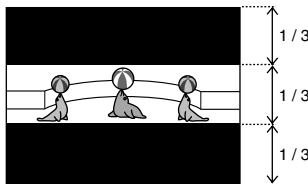
Line up the 3 projectors beside each other as shown above for setting the Wide Video Wall, and input the edited images as shown below into the projectors, after selecting " $3 \times 1$ " in "Division" and setting the Position Assignment.

- Using the XG-P20X or the XG-P25X



Input the image compressed horizontally to 1/3.

- Using the XG-V10 Series



Input the image using only the central 1/3 area of the vertical direction.

## Adjusting Images

### Gamma Correction

Changing the gamma value adjusts the tone of an image on the screen.

#### NOTE

This function is only available in the “Single Projector Operation Mode”.

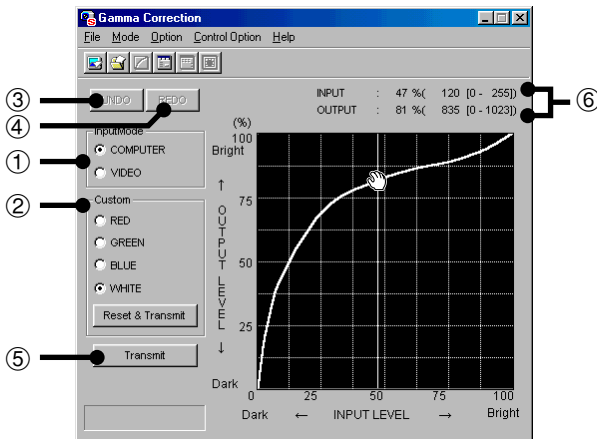
#### Before Adjusting

- Use the projector’s Gamma button to set the CUSTOM mode.
- Infrared communications (IrCOM) cannot be used when performing gamma correction. Connect a serial cable or LAN cable to the projector and the PC (page 10), then proceed to **Gamma Correction**.

#### 1 Select the “Gamma Correction” mode.

See section “Opening Modes” (page 20).

- ▶ The “Gamma Correction” window will open.



- ① Specify the source of the image. The default setting is “COMPUTER”
- ② Each of these colors except “WHITE” can be adjusted respectively. As you adjust “WHITE”, the values of the other three colors will be offset.

**NOTE**

The “**Reset & Transmit**” button resets the values of the color currently selected. If you want to reset both the red and green values, click the “**Reset & Transmit**” button in the “**RED**” mode, and then click the “**Reset & Transmit**” button again in the “**GREEN**” mode. If you want to reset to the original values, click the “**Reset & Transmit**” button in the “**WHITE**” mode.

- ③ To restore to the previous status after operating the gamma data.
- ④ To restore the status before the “UNDO” button was clicked.
- ⑤ To send all the adjustment signals to the projector
- ⑥ Gamma coordinate display (INPUT/OUTPUT)

**2 Select the “InputMode”.****3 Adjust the values of each color.**

Drag and drop the curve of the graph to adjust it to the proper value.

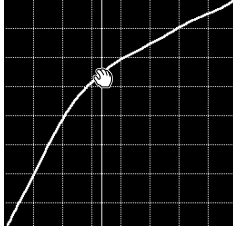
**4 Click “Transmit”.**

- ▶ The “**Now Transmitting...**” message is displayed during transmission.

## Adjusting the Gamma Curve

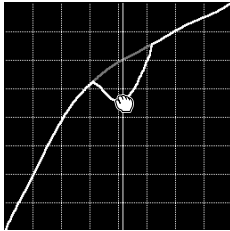
---

- 1 Repeat steps 1-2 of “Gamma Correction”.
- 2 Place the mouse pointer over the gamma curve.



The mouse pointer takes the shape of an open hand.

- 3 Drag the gamma curve.



The mouse pointer takes the shape of a closed hand and the curve changes.

The same operation is possible using the up and down arrow keys on the keyboard.

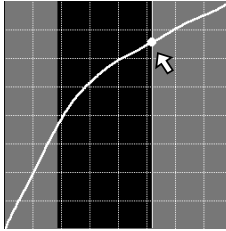
## Setting the gamma correction area

You can set the gamma correction area by using **Drag and Drop**. The gamma curve and mouse pointer moves within the set range after setting the gamma correction area.

The gamma correction area can also be set by using the right and left arrow keys on the keyboard while pressing the shift key.

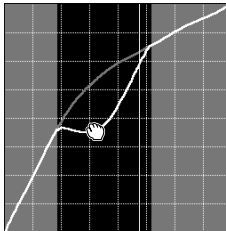
### 1 Drag the mouse pointer, then drop it.

The point at which the mouse pointer is released is set as the correction area.



### 2 Drag and drop the gamma curve.

The Gamma curve or mouse pointer moves within the set range.



#### NOTE

- To restore the previous status after operating the gamma data, click the “UNDO” button.
- To restore to the status before the “UNDO” button was clicked, click the “REDO” button.

## Saving the Gamma Correction Settings

---

- 1 Select “File”, then select “Save Gamma Data”.**
  - ▶ This opens the “Save As” dialog box.
- 2 Specify a “File name”.**
- 3 Specify a “Save In” location.**
- 4 Click “Save”.**

The current gamma correction settings of the projector will be saved.

## Loading the Gamma Correction Settings

---

- 1 Select “File”, then select “Load Gamma Data”.**
  - ▶ This opens the “Open” dialog box.
- 2 Specify a file location in “Look in”.**
- 3 Specify a “File name”.**
- 4 Specify a “Files of type”.**
- 5 Click “Open”.**

The gamma correction values will be loaded to the connected projector.

## Resetting Gamma

---

- 1 Select in “Custom” those colors whose values you want to return to the default setting.**

**NOTE** ▶

When selecting “WHITE”, the gamma curves of all the colors return to the default setting.

- 2 Click “Reset & Transmit”.**



# Setup for Transferring Images

## Changing Compression Rate

When transferring a BMP image file by **Presentation Transfer** or **Capture & Transfer**, you can change compression rates.

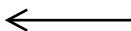
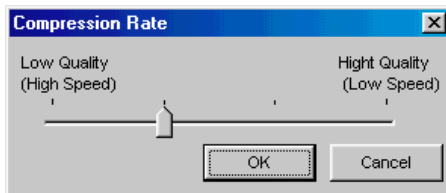
**NOTE** 

This mode cannot be used with the XG-V10 Series, the XG-P20X or the XG-P25X projector.

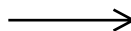
### Compression rate

- The default setting for image quality is “middle”.
- If you are transmitting the custom Image (BMP) used as **Startup Image** and **Background Image**, the image is automatically transmitted as “High quality, slow transmission” for best results. The BMP file will be transferred without any conversion to minimize the loss of image quality.
- If adjusted, the compression rate will be saved in each image folder as a file. The converted files then remain in the folder so that the conversion time can be shortened thereafter.

- 1 Click the “Option” menu, and select “Compression Rate”.



**Faster transmission  
but poorer image  
quality**



**Better image quality  
but slower transmission**

- 2 Drag and drop the pointer to the rate position you desire.
- 3 Click “OK”.
  - ▶ The compression rate in the selected folder changes.

# Transferring Images

## Presentation Transfer

This mode makes it possible to transfer images saved as BMP or JPEG files to the projector. A preview of the slides in the file folder selected is displayed on the PC monitor.

### NOTE

- This function is only available in the “Single Projector Operation Mode”.
- If you use the NV5/6/7, infrared communications can be available.

### Before Presentation

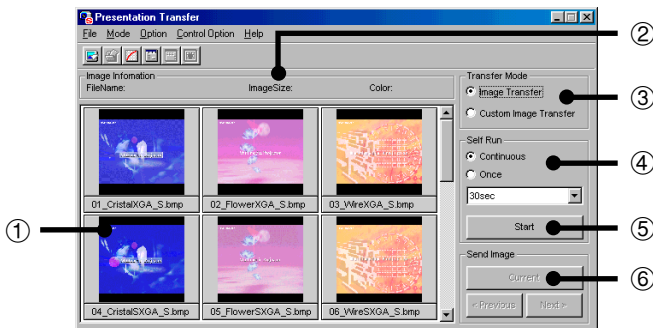
- Save beforehand the images you want to project using the following file formats and image sizes.

	File format	Image size (max.)
V10W	BMP	1280 × 1024
P20X P25X V10X	BMP	1024 × 768
C30X C40X C45 C50X NV5-7 P10X	BMP or JPEG	1024 × 768

### 1 Select the “Presentation Transfer” mode.

See section “Opening Modes” (page 20).

► The “Presentation Transfer” window will open.



- ① Images in the selected folder (step 3)
- ② Information of the selected image
- ③ Selecting the type of “Transfer Mode” (step 4)
- ④ Selecting the Presentation Method
- ⑤ Starts the “Self Run” transfer (page 85).
- ⑥ “Send Image” Transfer (page 84).

- 2 Click the “File” menu, and select “Open”.
- 3 Select the folder where the image files (Presentation Slides) are saved, and click “OK”.
  - ▶ The images in the selected folder are previewed in the “Presentation Transfer” window.

**NOTE**

If the size of the image is smaller than the panel resolution on the projector, the image will be displayed with black areas. However, the software will transfer the image in the original resolution.

- 4 Select “Image Transfer” in “Transfer Mode”.

**NOTE**

For details on the “Custom Image Transfer”, see [pages 90, 91](#).

- 5 On the projector side, the screen is automatically set to the CUSTOM mode.

To restore the previous screen, press the INPUT select button (INPUT1~5).

**NOTE**

- **For NV5/6/7 users:**
  - The projector must be in IrCOM mode to receive the images. Press the “IrCOM” button on the projector or the remote control.
- For the “Self Run” transfer, skip over to section “To send all the images (“Self Run)”” on [page 85](#).

## To send a single image (“Send Image”)

### 1 Select an image in the “Presentation Transfer” window to transfer.

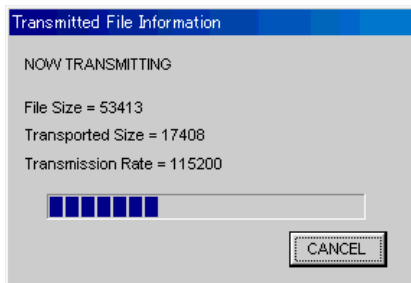
If you want to change the compression rate, see the section “Changing Compression Rate” (page 81).

#### NOTE

- The compression rate is applied to all the images in the selected folder.
- Changing the compression rate will change the image picture quality and transfer speed.

### 2 Click the “Current” button in the “Send Image” box.

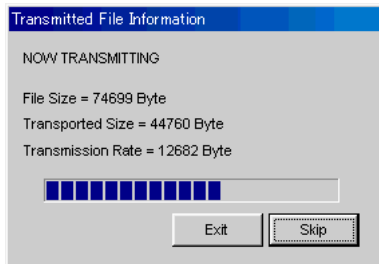
- ▶ The “Transmitted File Information” dialog box appears and the transfer begins. If you want to stop the transfer, click “CANCEL”.



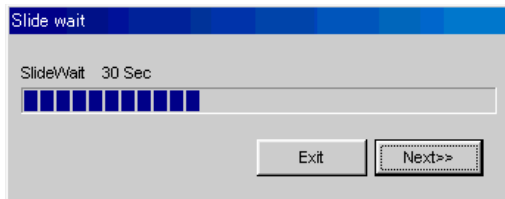
- ▶ To send the next image, click the “Next>” button in the “Send Image” box.
- ▶ To send the previous image, click the “<Previous” button in the “Send Image” box.
- ▶ The default order of images follows the file name. You can change the order of the image files by dragging and dropping them to the desired location.

## To send all the images (“Self Run”)

- 1 Select the desired method in “**Self Run**”.  
“**Continuous**” sends all images in the specified folder continuously.  
“**Once**” sends all images in the specified folder once.
- 2 Select the interval to send images in “**Self Run**”.  
You can select it in the range from 30 seconds to 5 minutes fixed in units of 15 seconds.
- 3 After step 4 on [page 83](#), click the “**Start**” button in the “**Self Run**” box of the “**Presentation Transfer**” window.
  - ▶ The “**Transmitted File Information**” dialog box will appear and the transfer will begin. If you want to stop the transfer, click “**Skip**”.



- ▶ After the transfer is completed, the “**Slide wait**” dialog box will appear until the image will be projected on the screen. If you want to cancel the interval and soon show the next image, click “**Next>>**”.



- ▶ To cancel “**Self Run**”, click “**Exit**”.

## Capture & Transfer

This mode allows you to transfer an image of what is currently displayed on the PC monitor.

### NOTE

- This mode is only available in the “Single Projector Operation Mode”.
- If you use the NV5/6/7, infrared communications are available.

### Before Presentation

- This function is not available for full screen slides (e.g. the “**Slide Show**” mode of Microsoft **PowerPoint**).

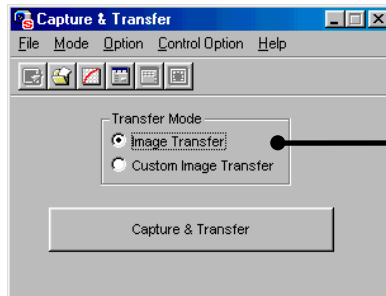
For full screen slides to use **Capture & Transfer**, see the section “Quick Transfer” (page 88).

## 1 Display the image you want to transfer.

## 2 Select the “Capture & Transfer” mode.

See section “Opening Modes” (page 20).

- ▶ The “**Capture & Transfer**” window will open.



Selecting the type of “**Transfer Mode**” (step 3)

## 3 Select “Image Transfer” in “Transfer Mode”.

If you want to change the compression rate, see the section “Changing Compression Rate” (page 81).

### NOTE

- For the details of the “**Custom Image Transfer**”, see pages 90, 91.
- Changing the compression rate will change the image picture quality and transfer speed.

On the projector side, the screen is automatically set to the CUSTOM mode.

**NOTE** **For NV5/6/7 users:**

The projector must be in IrCOM mode to receive the images. Press the “IrCOM” button on the projector or the remote control.

**4 Click the “Capture & Transfer” button in the “Capture & Transfer” window.**

- ▶ The “**Capture & Transfer**” window disappears and capturing begins.
- ▶ After capturing is completed, the “**Capture & Transfer**” window reappears and transfer of the captured image begins.
- ▶ The “**Transmitted File Information**” dialog box appears. If you want to stop the transfer, click “**CANCEL**”.

**To send another image**

Change the image displayed on the PC monitor and then repeat step 4.

## Quick Transfer

---

By applying the preset compression rate, this mode allows you to transfer images using simple steps.

**NOTE** ➤

- This function does not work with the following models:  
XG-P20X, XG-P25X, XG-V10X, XG-V10W, XG-NV1-4
- This mode transfers images under the following settings which cannot be modified.

- Normal picture quality
- Compression rate: Middle

The custom image used as **Startup Image** and **Background Image** cannot be transferred in this mode.

### Before Presentation

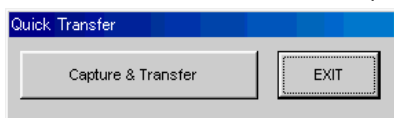
- Confirm that the “**Auto-Launch**” setting is “**ON**” (page 22) or the software is active.
- This function is available for full screen slides (e.g. the “**Slide Show**” mode of Microsoft **PowerPoint**).

**1 Display the image you want to transfer.**

**2 Hold the right mouse button down for 2 seconds.**

The position of the pointer can be anywhere on the display.

- ▶ The “**Quick Transfer**” window opens.



On the projector side, the screen is automatically set to the CUSTOM mode.

**NOTE** ➤

### For NV5/6/7 users:

The projector must be in IrCOM mode to receive the images. Press the “IrCOM” button on the projector or the remote control.



- 3 Click the “Capture & Transfer” button in the “Quick Transfer” window.**
  - ▶ The capturing begins.
  - ▶ The “**Transmitted File Information**” dialog box appears and the transfer of the captured image begins.  
If you want to stop the transfer, click “**CANCEL**”.
  - ▶ After the transfer is completed, the “**Transmitted File Information**” dialog box disappears.
- 4 Click “EXIT” in the “Quick Transfer” window.**

### **To send another image**

Change the displayed image on the PC monitor and repeat from step 2.

## Saving a Custom Image as Startup Image and Background Image

The projector has an option to display a custom image (e.g. your company logo) upon startup of the projector (**Startup Image**) or when there is no signal (**Background Image**).

You can choose your custom image from the projector's mode menu. Refer to the projector's operation manual for how to set **Startup Image** and **Background Image**.

Use **Presentation Transfer** or **Capture & Transfer**, when sending a custom image to the projector.

Make sure to prepare beforehand image files, which satisfy the following conditions, when sending custom images to the projector using **Presentation Transfer**.

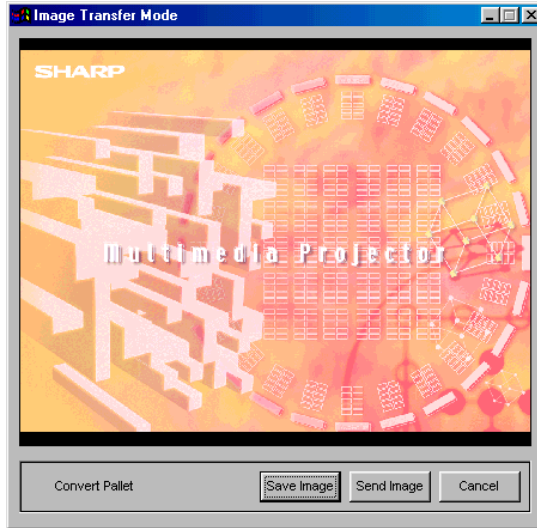
	Image size (max.)	File format	Color (max.)
V10W	1280 × 1024	BMP	24 bit true color (*1)
C30X	1024 × 768		
C40X			
NV5-7			
P10X			
P20X			
P25X			
V10X			

- \*1:
- Images, which go over 240 colors, are reduced automatically to 240 colors when transferred.
  - For best results, create your image with a 240-color palette. A 256-color palette can also be used, however there may be some image quality lost during transfer.

### NOTE

This function does not work with the following models:  
PG-C45 Series, XG-C50X, XG-NV1-4

- 1 Select “**Custom Image Transfer**” in “**Transfer Mode**”.  
Refer to “Transferring Images” (page 82) for how to transfer the image.
- 2 Click “**Current**” in the “**Presentation Transfer**” window or click “**Capture & Transfer**” in the “**Capture & Transfer**” window to transfer images.  
▶ The preview window is displayed.



If the original image goes over 240 colors, an image reduced to 240 colors will be displayed.

If you want to save color reduced images, click the “**Save Image**” button.

- 3 Click “**Send Image**”.  
The image is transferred to the projector.

**NOTE** ▶

- When you want to clear the custom image stored in the projector, cancel the transmission during custom image transfer. The custom image stored in the projector will be cleared.
- The “**Custom Image Transfer**” mode saves one image file only and overwrites the previously transferred image if you send another image file.
- To avoid erasing the custom image, you should change the transfer mode to “**Image Transfer**” after sending the custom image.

# Table of Functions by Model

The table below shows the available function for other projector.

√ : Signifies available function

- : Signifies unavailable function

		V10, P20X, P25X		P10X, C30X, C40X, C45, C50X		NV5-7		NV1-4		
		Single	Multi		Single	Multi	Single	Multi	Single	Multi
			No ID	ID						
Serial (RS-232C)	Network Control	√	√	√	√	√	√	√	√	√
	Gamma Correction	√	-	-	√	-	√	-	-	-
	Presentation	√	-	-	√	-	√	-	-	-
IrCOM (IrDA)	Network Control	-	-	-	-	-	-	-	-	-
	Gamma Correction	-	-	-	-	-	-	-	-	-
	Presentation	-	-	-	-	-	√	-	-	-
LAN	Network Control	√ <sup>*1</sup>	-	√ <sup>*1</sup>	-	-	-	-	-	-
	Gamma Correction	√ <sup>*1</sup>	-	-	-	-	-	-	-	-
	Presentation	√ <sup>*1</sup>	-	-	-	-	-	-	-	-

\*1: With Optional Expansion Board (when using the XG-V10 Series only)

MENU	V10, P20X, P25X			P10X, C30X, C40X, C45, C50X		NV5-7		NV1-4	
<b>File</b>									
Open	√	√	√	√	√	√	√	√	√
Operation Mode Setting	√	√	√	√	√	√	√	√	√
Projector Setting	√	√	√	√	√	√	√	√	√
Scan Setting	-	-	√	-	-	-	-	-	-
Save Control Setting	√	√	√	√	√	√	√	√	√
Load Control Setting	√	√	√	√	√	√	√	√	√
Save Gamma Data	√	√	√	√	√	√	√	-	-
Load Gamma Data	√	√	√	√	√	√	√	-	-
Exit	√	√	√	√	√	√	√	√	√
<b>Mode</b>									
Capture & Transfer	√	-	-	√	-	√	-	-	-
Presentation Transfer	√	-	-	√	-	√	-	-	-
Gamma Correction	√	-	-	√	-	√	-	-	-
Single Control	√	-	-	√	-	√	-	√	-
Multiple Control	-	√	√	-	√	-	√	-	√
Video Wall Setting	-	-	√	-	-	-	-	-	-
<b>Option</b>									
Auto-Launch ON / OFF	√	√	√	√	√	√	√	√	√
Compression Rate	-	-	-	√	√	√	√	-	-
<b>Control Option</b>									
Projector Timer Control	-	√	√	-	√	-	√	-	√
Password	√	√	√	√	√	-	-	-	-
Keylock Level	√	√	√	√	√	-	-	-	-
Projector / Unique Name	-	√	√	√ <sup>*2</sup>	√ <sup>*2</sup>	-	-	-	-
Group Setting	-	√	√	-	√	-	√	-	√
E-mail Address Book	-	√	√	-	√	-	√	-	√
Send E-mail Setting	-	√	√	-	√	-	√	-	√
Error Log Viewer	-	√	√	-	√	-	√	-	√
Configuration	-	√	√	-	√	-	√	-	√

\*2 : This function is available with the PG-C45 Series and the XG-C50X projectors only.

• ID setting is available with the XG-V10 Series, the XG-P20X and the XG-P25X projectors only.

## Unable to transfer images or an error occurs with communication

- ◀ Check that the connection type is surely selected as you intend.
- ◀ Check that the image size is 1280 × 1024 or lower.

### In case of cable communications (RS-232C and LAN)

- ◀ Check whether the transmission speed set at “Projector Setting” or “Scan Setting” is the same as the transmission speed set at “RS-232C” on the projector’s OSD menu.
- ◀ Make sure that the settings of the RS-232C port on the PC are as follows:
  - Data length: 8 bits
  - Parity bit: None
  - Stop bit: 1 bit
  - Flow control: None
- ◀ Check that the port for the RS-232C serial cable or LAN cable is correctly specified in the PC’s settings.
- ◀ Check that the cable is correctly and securely connected ([page 10](#)).

### In case of infrared communications (IrCOM)

- ◀ Check that the infrared ports (the projector and the PC) are within 1 meter (3 ft.) distance and keep the vertical and horizontal range within 30 degrees.
- ◀ Check that there are no obstacles between the projector and the PC.
- ◀ Avoid using this function under strong lighting conditions. Strong light sources such as sunlight or fluorescent lighting may interfere with image transmissions.
- ◀ Check that the projector is in the IrCOM mode before transferring images from the PC. (See the projector operation manual.) The On-screen Display “**IrCOM stand by**” or “**IrCOM stand by, Waiting for Data**” will appear on the projection screen.
- ◀ Check that your PC’s IrDA port is activated and configured properly. Check the PC’s instruction manual.
- ◀ Check the “Connection Type” in Single Projector Setting ([page 30](#)).
- ◀ Confirm that the port for infrared communications is correctly specified in the PC’s settings.
- ◀ For Windows 95 users: Check that Microsoft’s IrDA 2.0 (Infrared Driver) is installed ([page 9](#)).
- ◀ Check that the display mode is appropriate for the images. (Normal transfer: 24 bit color or less; “Startup Image” transfer: 256 colors for BMP files)
- ◀ Infrared communications (IrCOM) cannot be used with Windows NT4.0 Workstation, Me, 2000 Professional, XP Home or Professional Edition.

## “Gamma Correction”/“Advanced Control for Adjustment” is not operating properly

---

- ◀ Reconnect the RS-232C serial cable or LAN cable and try again. The cable may not be connected properly or an error may have occurred during the transmission.
- ◀ Check that the port for serial (RS-232C) communications is correctly specified in the PC’s settings (page 30).
- ◀ Projector may not be receiving command because of the projector’s setting. Please check the projector’s “**ON/OFF**” status, “**INPUT SELECT**” status (**COMPUTER**, **VIDEO**) or the input signal. Resend the command after adjusting these items.
- ◀ Before **Gamma Correction**, use the projector’s Gamma button and set the **CUSTOM** mode.

## The transmitting speed is low

---

- ◀ Do not use the projector’s remote control while transferring.
- ◀ Check the compression rate setting (page 81).
- ◀ Check the Transmission Speed setting, in the case of RS-232C cable communications (page 29).
- ◀ Note that custom image as **Startup Image** and **Background Image** is fixed in the “High quality, slow transmission” setting.
- ◀ Note that **Quick Transfer** is fixed in the “Normal quality, middle speed” setting.
- ◀ Check that your PC supports IrDA 1.1.
- ◀ Check the transmitting speed from your PC. If the speed is 4 Mbps, check that an IrDA 1.1 driver is installed (page 9). Refer to the PC’s instruction manual.

## If 4 Mbps IrDA should fail

---

- ◀ If 4 Mbps IrDA should fail, try transmitting at 115 kbps. The following is the procedure to change the transmitting speed.
  - 1) Click the Windows “**Start**” button and then select “**Settings**”.
  - 2) Select “**Control Panel**”.
  - 3) Double click the “**Infrared**” icon.
  - 4) Click the “**Options**” tab.
  - 5) Select “**Limit connection speed to**” and change it to 115kbps.

## Unable to save the startup image

---

- ◀ Do not turn off the projector while transmission.  
The image data may be lost.

## Quality of the image is low

---

- ◀ Check the compression rate setting ([page 81](#)).
- ◀ Note that **Quick Transfer** is fixed in the “Normal quality, middle speed” setting.

## Unable to speed up the transfer or improve the image quality

---

- ◀ If the image file is saved in JPEG format, its compression rate cannot be changed.  
Note that the compression rate only applies to BMP file format.

## Unable to speed up “Gamma Correction” though the transmitting speed was changed

---

- ◀ The transmitting speed setting applies to image transfer via cable only. The speed for transfer of gamma values is fixed at 9,600 bps.

# List of Error Messages

**The internal temperature is abnormally high.**

**The internal temperature is high.**

## **Temperature Error**

**[Problem]**

Blocked air intake. / Clogged air filter.

Cooling fan breakdown. / Internal circuit failure.

**[Possible Solution]**

- a. Relocate the projector to an area with proper ventilation.
- b. Replace the filter.
- c. Take the projector to your nearest Authorized Sharp Industrial LCD Products Dealer or Service Center for repair.

**The cooling fan is not operating.**

## **Internal Cooling Fan Error**

**[Problem]**

Cooling fan breakdown.

**[Possible Solution]**

Take the projector to your nearest Authorized Sharp Industrial LCD Products Dealer or Service Center for repair.

**The filter cover is open.**

## **Filter Cover Error**

**[Problem]**

The filter cover is not properly mounted, or filter is not properly mounted.

**[Possible Solution]**

Mount the filter cover and filter properly.

**NOTE** ➤

If this error message appears even though the filter cover is properly mounted, take the projector to your nearest Authorized Sharp Industrial LCD Products Dealer or Service Center for repair.

**The remaining lamp life is below 100 hours.**

**[Possible Solution]**

- a. Carefully replace the lamp and reset the lamp timer.
- b. Take the projector to your nearest Authorized Sharp Industrial LCD Products Dealer or Service Center for repair.

**The lamp is burnt-out.**

**[Possible Solution]**

- a. Carefully replace the lamp and reset the lamp timer.
- b. Take the projector to your nearest Authorized Sharp Industrial LCD Products Dealer or Service Center for repair.



## Lamp Error

### The lamp does not ignite.

**[Problem]**

Burnt-out lamp. / Lamp circuit failure.

**[Possible Solution]**

- a. Carefully replace the lamp and reset the lamp timer.
- b. Take the projector to your nearest Authorized Sharp Industrial LCD Products Dealer or Service Center for repair.

## No response from the projector.

### Communication Error

**[Problem]**

Communications with the projector cannot be established for some reason.

**[Possible Solution]**

Set the computer and projector to the same communications speed.  
Check the connections of the cables.

## COM1 is already used by other application software.

**[Possible Solution]**

Use a COM port not being used by another application software.

## Failed to connect to the projector via LAN.

**[Problem]**

The projector is being controlled already from another PC via the LAN.

**[Possible Solution]**

Cancel the control from the other PC.

## This command cannot be used with this projector now.

**[Problem]**

A projector with that function has not been selected in “Projector Setting”.

**[Possible Solution]**

Select an appropriate projector in “Projector Setting”.

**NOTE** 

Some functions may not be usable under certain circumstances. For example, the “Auto Sync.” function cannot be used if no image source is being input to the projector. The above error message appears in such cases as well.

**Unable to connect to the e-mail server (SMTP server).**

**[Problem]**

Could not connect to e-mail server (SMTP server) for sending e-mail messages.

**[Possible Solution]**

There may be no such e-mail server in the network or the server may be down. For details, contact the system operator.

**Incorrect sender e-mail address**

**[Problem]**

E-mail sender's e-mail address has not been properly input.

**[Possible Solution]**

Input the proper e-mail address.

**Incorrect recipient e-mail address**

**[Problem]**

E-mail recipient's e-mail address has not been properly input.

**[Possible Solution]**

Input the proper e-mail address.

**IP Address is imperfect.**

**Please input the correct IP Address.**

**[Problem]**

The IP address input at "Scan Setting" is not correct.

**[Possible Solution]**

Input the proper IP address.

# Glossary

<b>Word</b>	<b>Explanation</b>	<b>Page</b>
<b>About This Software</b>	Version information	23
<b>Auto-Launch ON/OFF</b>	Specify if this software launches automatically upon startup.	22
<b>AV Mute</b>	Function turning both “Black Screen” and “Mute” on.	32
<b>Background Image</b>	Image displayed when no signal is input. Background Image uses the same image data as Startup Image.	90
<b>BMP</b>	Image file format	3
<b>Capture &amp; Transfer</b>	Transfer an image of what is currently displayed on a monitor.	86
<b>COM</b>	Communication port	10
<b>Compression Rate</b>	Rate of compression of the images transmitted from a PC to the projector	81
<b>Custom Image</b>	General term for background image and startup image	90
<b>Custom Image Transfer</b>	Transfer the custom image to the projector. (Unless the custom image is transferred again (overwritten), the screen is retained in the projector’s memory.)	91
<b>Drag &amp; Drop</b>	Select an item and modify it using the mouse.	79
<b>Error Log Viewer</b>	Browse the log of errors generated in the multiple projector operation mode.	53
<b>Exit</b>	Exit from this software	23
<b>File</b>	Main menu item	23
<b>Gamma</b>	Projector’s specific values of specified colors	76
<b>Gamma Correction</b>	Adjust the projector’s gamma values from PC.	76
<b>Group Setting</b>	Make the settings for controlling groups of projectors in the multiple operation mode.	35

<b>Word</b>	<b>Explanation</b>	<b>Page</b>
<b>Help</b>	Help in using this software	23
<b>ID</b>	For specifying the individual projectors when controlling multiple projectors simultaneously.	24
<b>Image Transfer</b>	Transfer the image to the projector. (Unlike custom image transfer, not stored in projector.)	82
<b>IP</b>	Abbreviation of "Internet Protocol"	26
<b>IP Address</b>	Address for specifying the computer on network.	26
<b>IrCOM</b>	Sharp infrared wireless communication	9
<b>IrDA</b>	Abbreviation of "Infrared Data Association". Name of infrared communications standardization group and name of standards	9
<b>JPEG</b>	Abbreviation of "Joint Photographic Experts Group" "JPEG" is an image file format.	3
<b>Keylock Level</b>	Set whether to enable or disable operating buttons on projector.	40
<b>LAN</b>	Local Area Network	10
<b>Mode</b>	Main menu item	22
<b>Multiple Control</b>	Simultaneous control of multiple projectors from PC.	32
<b>Multiple Operation Panel</b>	Operating panel for integrated control of projectors in multiple projector operation mode.	32
<b>Open</b>	Open file folder containing images to be transmitted to the projector (for Presentation Transfer)	83
<b>Operation Mode</b>	Set whether to control a single projector or multiple projectors.	25
<b>Option</b>	Main menu item	22
<b>Password</b>	When a password is set, some functions can only be changed by the person with the password.	37
<b>Presentation Transfer</b>	Transfer a series of images (BMP or JPEG) to the projector	82

<b>Word</b>	<b>Explanation</b>	<b>Page</b>
<b>Projector Name</b>	Names freely given to individual projectors. Unlike “Unique Name”, can be changed freely by anyone.	42
<b>Projector Setting</b>	Set the method of communication with the projector.	28
<b>Projector &amp; Unique Name</b>	Make and change the “Projector Name” and “Unique Name” settings.	42
<b>Quick Transfer</b>	Shortcut to transferring an image of what is currently displayed on a monitor	88
<b>RS-232C</b>	Serial interface protocol with which many PCs are equipped.	9
<b>Single Control</b>	Control a single projector from a PC.	62
<b>Scan</b>	Function for searching for all connecting projectors and automatically identifying them.	26
<b>Scan Setting</b>	Set the COM port and IP address for searching with the scan function.	26
<b>Self Run</b>	Scan slides in a specified folder one after another to the projector	85
<b>Serial Number</b>	Serial numbers assigned to individual projectors	26
<b>Startup Image</b>	Image displayed when projector turned on. Startup Image uses the same image data as Background Image.	90
<b>Transfer Mode</b>	Change the function from “Custom Image Transfer” and/or “Image Transfer”	91
<b>Transmission Speed</b>	Transmission speed via the projector’s RS-232C port and PC’s serial port.	26
<b>Unique Name</b>	Names given to individual projectors. Unlike “Projector Name”, when the password setting is set, can only be changed by person with password.	42

## Services

Please contact nearest Sharp dealer if there are any problems.

For user purchased the projector in following countries, you can contact to the addresses shown if you have problems.

### U.S.A.

**Sharp Electronics Corporation**  
1-888-GO-SHARP (1-888-467-4277)  
lcdsupport@sharpsec.com  
<http://www.sharplcd.com>

### Canada

**Sharp Electronics of Canada Ltd.**  
(905) 568-7140  
<http://www.sharp.ca>

### Mexico

**Sharp Electronics Corporation Mexico Branch**  
(525) 716-9000  
<http://www.sharp.com.mx>

### Latin America

**Sharp Electronics Corp. Latin American Group**  
(305) 264-2277  
www.servicio@sharpsec.com  
<http://www.siemprisharp.com>

### Germany

**Sharp Electronics (Europe) GMBH**  
01805-234675  
<http://www.sharp.de>

### U.K.

**Sharp Electronics (U.K.) Ltd.**  
0161-205-2333  
custinfo@sharp-uk.co.uk  
<http://www.sharp.co.uk>

### Italy

**Sharp Electronics (Italy) S.P.A.**  
(39) 02-89595-1  
<http://www.sharp.it>

### France

**Sharp Electronics France**  
01 49 90 35 40  
hotlinecd@sef.sharp-eu.com  
<http://www.sharp.fr>

### Spain

**Sharp Electronica Espana, S.A.**  
93 5819700  
sharplcd@sees.sharp-eu.com  
<http://www.sharp.es>

### Switzerland

**Sharp Electronics (Schweiz) AG**  
0041 1 846 63 11  
cattaneo@sez.sharp-eu.com  
<http://www.sharp.ch>

### Sweden

**Sharp Electronics (Nordic) AB**  
(46) 8 6343600  
vision.support@sen.sharp-eu.com  
<http://www.sharp.se>

### Information

You can see information about Sharp projectors on the following website. <http://www.sharp-world.com/projector/>

### Benelux

**SHARP Electronics Benelux BV**  
0900-SHARPCE (0900-7427723) Nederland  
9900-0159 Belgium  
<http://www.sharp.nl>  
<http://www.sharp.be>  
<http://www.sharp.lu>

### Austria

**Sharp Electronics Austria (Ges.m.b.H.)**  
0043 1 727 19 123  
pogats@sea.sharp-eu.com  
<http://www.sharp.at>

### Australia

**Sharp Corporation of Australia Pty. Ltd.**  
1300-135-022  
<http://www.sharp.net.au>

### New Zealand

**Sharp Corporation of New Zealand**  
(09) 634-2059, (09) 636-6972  
<http://www.sharpnz.co.nz>

### Singapore

**Sharp-Roxy Sales (S) Pte. Ltd.**  
65-226-6556  
ckng@srs.global.sharp.co.jp  
<http://www.sharp.com.sg>

### Hong Kong

**Sharp-Roxy (HK) Ltd.**  
(852) 2410-2623  
dcmktg@srh.global.sharp.co.jp  
<http://www.sharp.com.hk>

### Malaysia

**Sharp-Roxy Sales & Service Co.**  
(60) 3-5125678

### U.A.E.

**Sharp Middle East Fze**  
971-4-81-5311  
helpdesk@smef.global.sharp.co.jp

### Thailand

**Sharp Thebnakorn Co. Ltd.**  
02-236-0170  
svc@stcl.global.sharp.co.jp  
<http://www.sharp-th.com>

### Korea

**Sharp Electronics Incorporated of Korea**  
(82) 2-3660-2002  
webmaster@sharp-korea.co.kr  
<http://www.sharp-korea.co.kr>

### India

**Sharp Business Systems (India) Limited**  
(91) 11- 6431313  
service@sharp-oa.com

**SHARP CORPORATION**